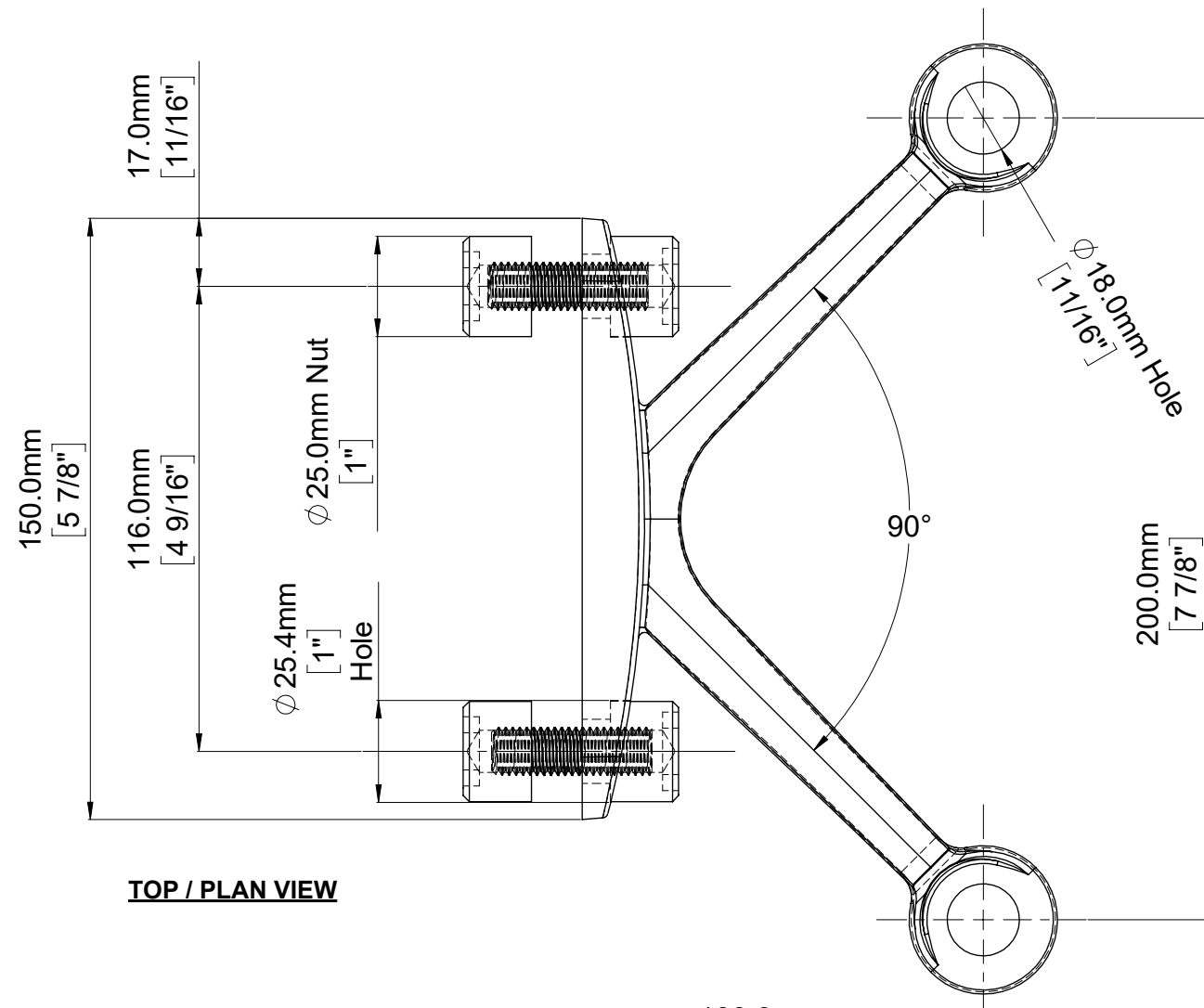
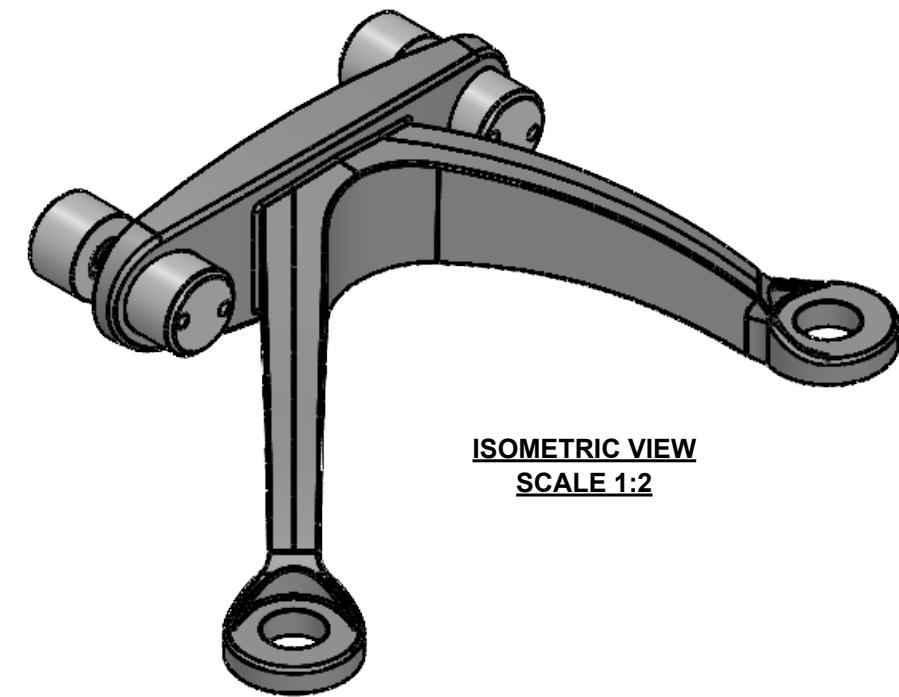


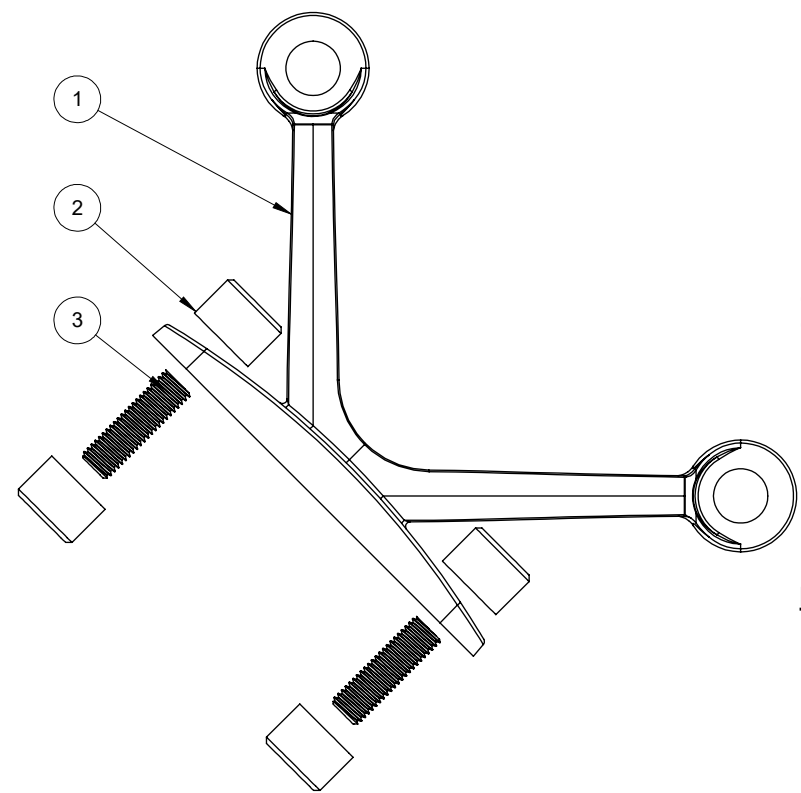
ITEM NO.	PART NUMBER	DESCRIPTION	MATERIAL	FINISH	QTY.
1	SS202SV	TWO ARM SIDE MOUNTED V S20 SPIDER	GD316 SS	BRUSHED #4	1
2	NB4-P11	BACK NUT FOR M12	A2-70 (18-8)	EX WORKS	4
3	ST-M12X40	THREADED STUD M12X40mm	GD316 SS	FINE MACHINED	2



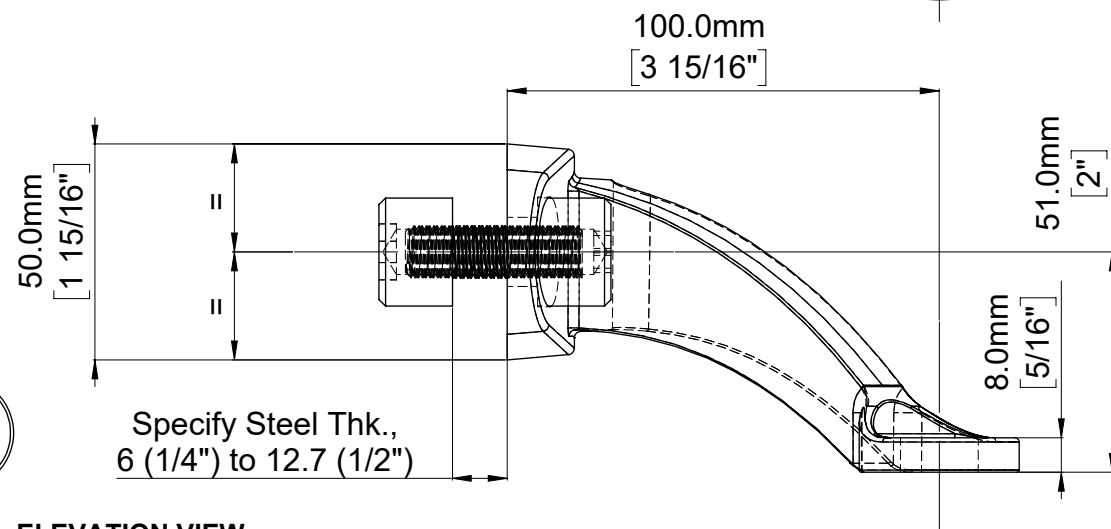
TOP / PLAN VIEW



**ISOMETRIC VIEW
SCALE 1:2**



EXPLODED VIEW



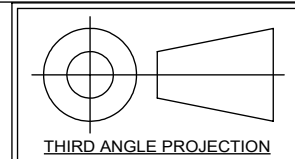
ELEVATION VIEW

Specify Steel Thk.,
6 (1/4") to 12.7 (1/2")

GENERAL TOLERANCES (mm) UNLESS SPECIFIED								
LINEAR DIMENSION TOLERANCES (ISO 2768 - FINE)								
NOM. DIMENSION	0.5 TO 3	3 TO 6	6 TO 30	30 TO 120	120 TO 400	400 TO 1000	1000 TO 2000	2000 TO 4000
TOLERANCE	±0.05	±0.05	±0.1	±0.15	±0.2	±0.3	±0.5	-
ANGULAR DIMENSION TOLERANCES (ISO 2768 - FINE)					EXT. RADIUS / CHAMFER HEIGHTS (ISO 2768 - FINE)			
NOM. DIMENSION	0 TO 10	10 TO 50	50 TO 120	120 TO 400	NOM. DIMENSION	0.5 TO 3	3 TO 6	OVER 6
TOLERANCE	±1°	±0°30'	±0°20'	±0°10'	TOLERANCE	±0.2	±0.5	±1.0

**** NOTE: SUGGESTED PAIRING - STELLA ARTICULARING BOLTS ****

ASSEMBLY DRAWING - SKU #SS202SVHMH6S013
TWO ARM SIDE MOUNTED "V" S20 SPIDER - SS201SV:
 200mm [7 7/8"] V SPREAD SPIDER FITTING w/ BRUSHED #4 FINISH
 (INCLUDES M12 STUDS & BACK NUTS)



SCALE	1:2
DWG No	SS202SVHMH6S013

