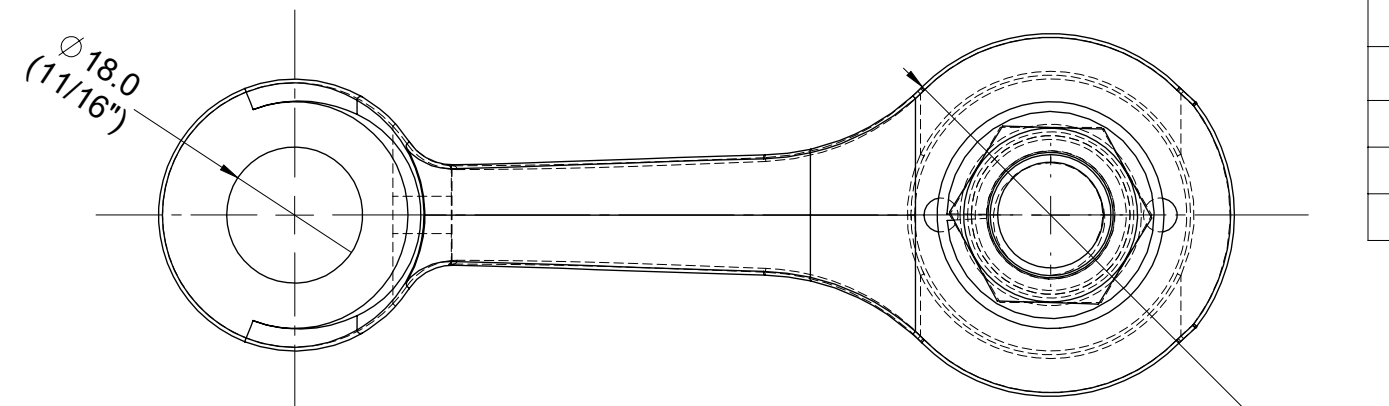
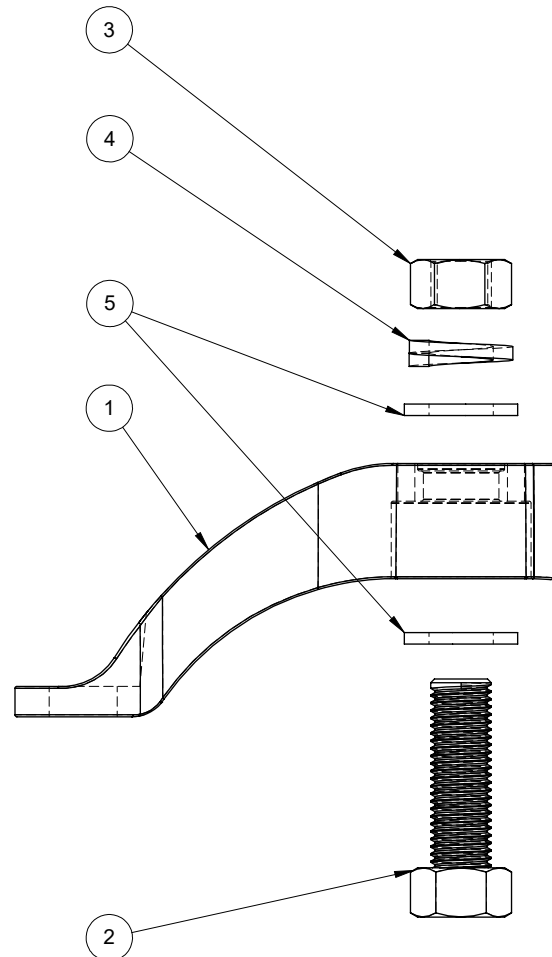


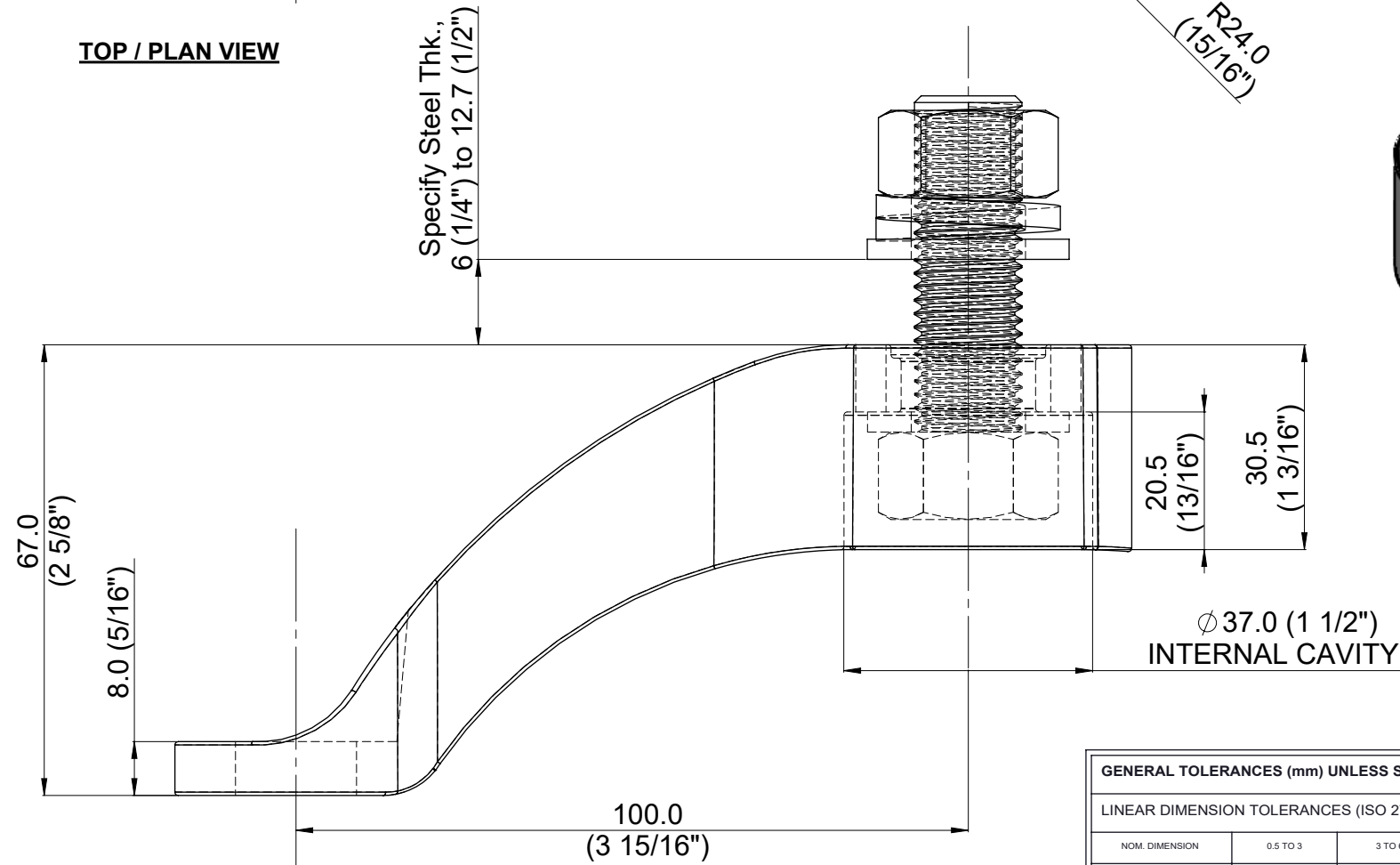
| ITEM NO. | PART NUMBER | DESCRIPTION                        | MATERIAL     | FINISH     | QTY. |
|----------|-------------|------------------------------------|--------------|------------|------|
| 1        | SS201FT     | SINGLE ARM FACE MOUNTED S20 SPIDER | GD316 SS     | BRUSHED #4 | 1    |
| 2        | HB-M16x50   | Hex Bolt M16x50                    | A2-70 (18-8) | EX WORKS   | 1    |
| 3        | Hex Nut M16 | Hex Nut M16                        | A2-70 (18-8) | EX WORKS   | 1    |
| 4        | SW-M16      | LOCK WASHER M16                    | A2-70 (18-8) | EX WORKS   | 1    |
| 5        | HN - M16    | WASHER FLAT M16                    | A2-70 (18-8) | EX WORKS   | 2    |



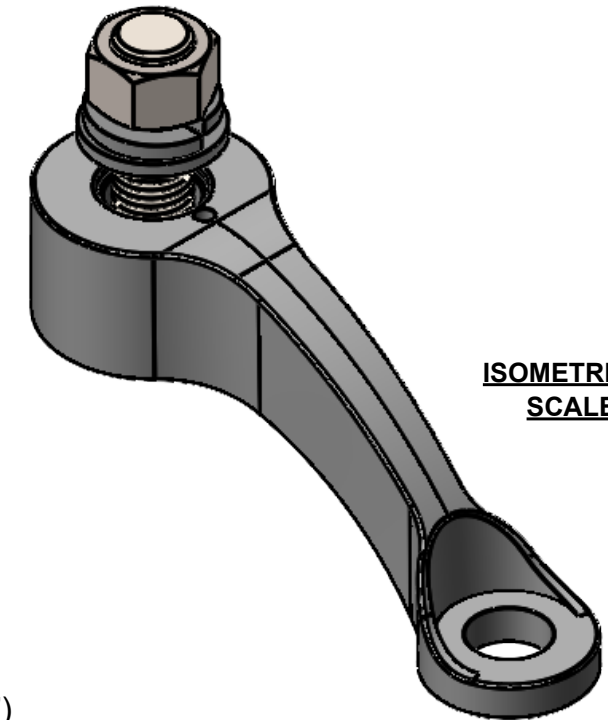
**TOP / PLAN VIEW**



**EXPLODED VIEW**



**ELEVATION VIEW**

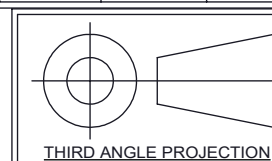


**ISOMETRIC VIEW  
SCALE 1:2**

| GENERAL TOLERANCES (mm) UNLESS SPECIFIED       |          |          |           |            |   |             |              |              |
|--|----------|----------|-----------|------------|---|-------------|--------------|--------------|
| LINEAR DIMENSION TOLERANCES (ISO 2768 - FINE)  |          |          |           |            |   |             |              |              |
| NOM. DIMENSION                                 | 0.5 TO 3 | 3 TO 6   | 6 TO 30   | 30 TO 120  | 120 TO 400                                      | 400 TO 1000 | 1000 TO 2000 | 2000 TO 4000 |
| TOLERANCE                                      | ±0.05    | ±0.05    | ±0.1      | ±0.15      | ±0.2  | ±0.3        | ±0.5         | -            |
| ANGULAR DIMENSION TOLERANCES (ISO 2768 - FINE) |          |          |           |            | EXT. RADIUS / CHAMFER HEIGHTS (ISO 2768 - FINE) |             |              |              |
| NOM. DIMENSION                                 | 0 TO 10  | 10 TO 50 | 50 TO 120 | 120 TO 400 | NOM. DIMENSION                                  | 0.5 TO 3    | 3 TO 6       | OVER 6       |
| TOLERANCE                                      | ±1°      | ±0°30'   | ±0°20'    | ±0°10'     | TOLERANCE                                       | ±0.2        | ±0.5         | ±1.0         |

**\*\* NOTE: SUGGESTED PAIRING - STELLA ARTICULARING BOLTS \*\***

**ASSEMBLY DRAWING - SKU #SS201FTNHH6S013**  
**SINGLE ARM FACE MOUNTED S 20 SPIDER - SS20TFT:**  
 100mm [3 15/16"] LONG SPIDER FITTING w/ BRUSHED #4 FINISH  
 (INCLUDES M16 HEX BOLT & NUT, FLAT & LOCK WASHERS)



THIRD ANGLE PROJECTION

|        |                 |
|--------|-----------------|
| SCALE  | 1:1             |
| DWG No | SS201FTNHH6S013 |



UNIT 105-8218 NORTH FRASER WAY, BURNABY, BC, V3N 0E9  
 TEL (604) 231 5892 WWW.STELLAGLASSHARDWARE.COM