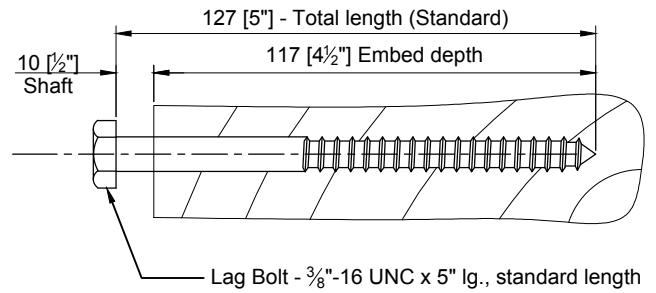


## INSTALLING THE LAG BOLT

Our standard  $\frac{3}{8}$ " lag bolt is 127mm [5"] long.  
The required embed depth for use with the ST503 standoff is 117mm [4½"].

Pre-drill 120mm deep, using a 7mm [ $\frac{9}{32}$ " or  $\frac{17}{64}$ "] drill bit.

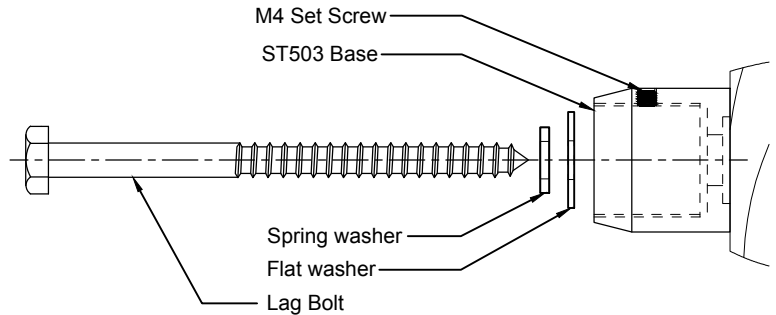
For different conditions, please consult with Stella for alternative solutions.



## INSTALLING THE BASE TO THE SUBSTRATE

Bolt the ST503 base directly onto the wood substrate with the washers provided.

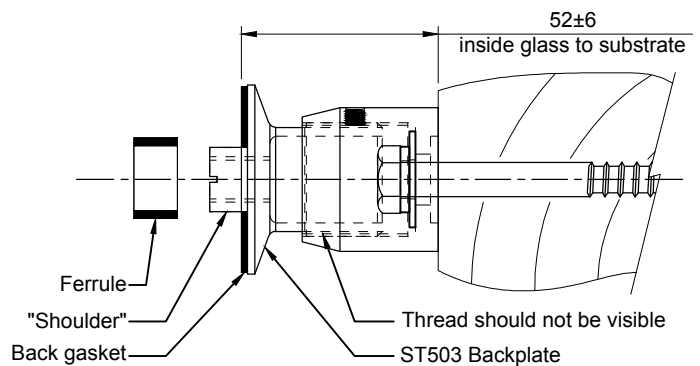
**NOTE:** Ensure the base is oriented such that the M4 set screw can be reached after the glass is installed.



## INSTALLING THE BACK PLATE

Install ST503 back plate onto the base and set it to the required distance (usually inside of glass to substrate).

**NOTE:** The outer thread of the back plate should not be visible. If this thread is visible, the backplate is not engaged far enough into the base, which may affect the structural integrity of the hardware.



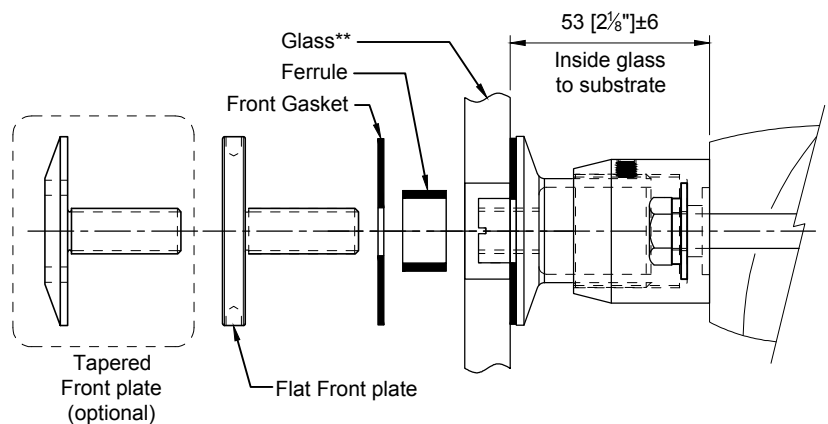
## INSTALLING AND ALIGNING THE GLASS

Install glass onto the shoulder of the backplate and fasten the face plate (ensure gaskets and ferrule are in place to prevent glass-to-metal contact).

If glass requires re-alignment, remove the face plate and adjust the backplate using a flat screwdriver (lift glass to take weight off the back plate, but removal of glass is not required).

For final tightening of the front plate, use the following spanner (can be supplied by Stella):

- Flat front plate: C-Spanner
- Tapered front plate: Pin-Spanner



**Optional:** Tighten the M4 set screw to lock the back plate.

**\*\*Hole in Glass:**

Minimum:  $\varnothing 22.2\text{mm}$  [ $\varnothing \frac{7}{8}$ "]  
Recommend:  $\varnothing 25.4\text{mm}$  [ $\varnothing 1$ "]  
Maximum:  $\varnothing 28.6\text{mm}$  [ $\varnothing 1\frac{1}{8}$ "]

Rev.	Date	Description	Drawn by	Checked by
1	Sept 6-2019	Revised format	MT	JS

**Disclaimer:**  
These instructions provide guidance for installation only. They do not constitute suitability for application, which should be provided by a registered Engineer.

**Hole in glass:** See above  
Dimensions millimeter unless otherwise shown.  
Apply loctite 243 to all threads during assembly (To increase curing speed, please apply activator 7649)

Drawn	Drawn date
RS	MAY 03-13
Checked	Checked date
-	-
Scale	Rev.
1:2	1
DWG No	
ST503-W-IM-01	



[t] (604) 231 5892  
[f] (604) 231 5893  
[e] info@stellaglasshardware.com

## INSTALLATION INSTRUCTION ADJUSTABLE STANDOFF WITH LAG BOLT MOUNTED TO WOOD ST503-W (FLAT OR TAPERED)