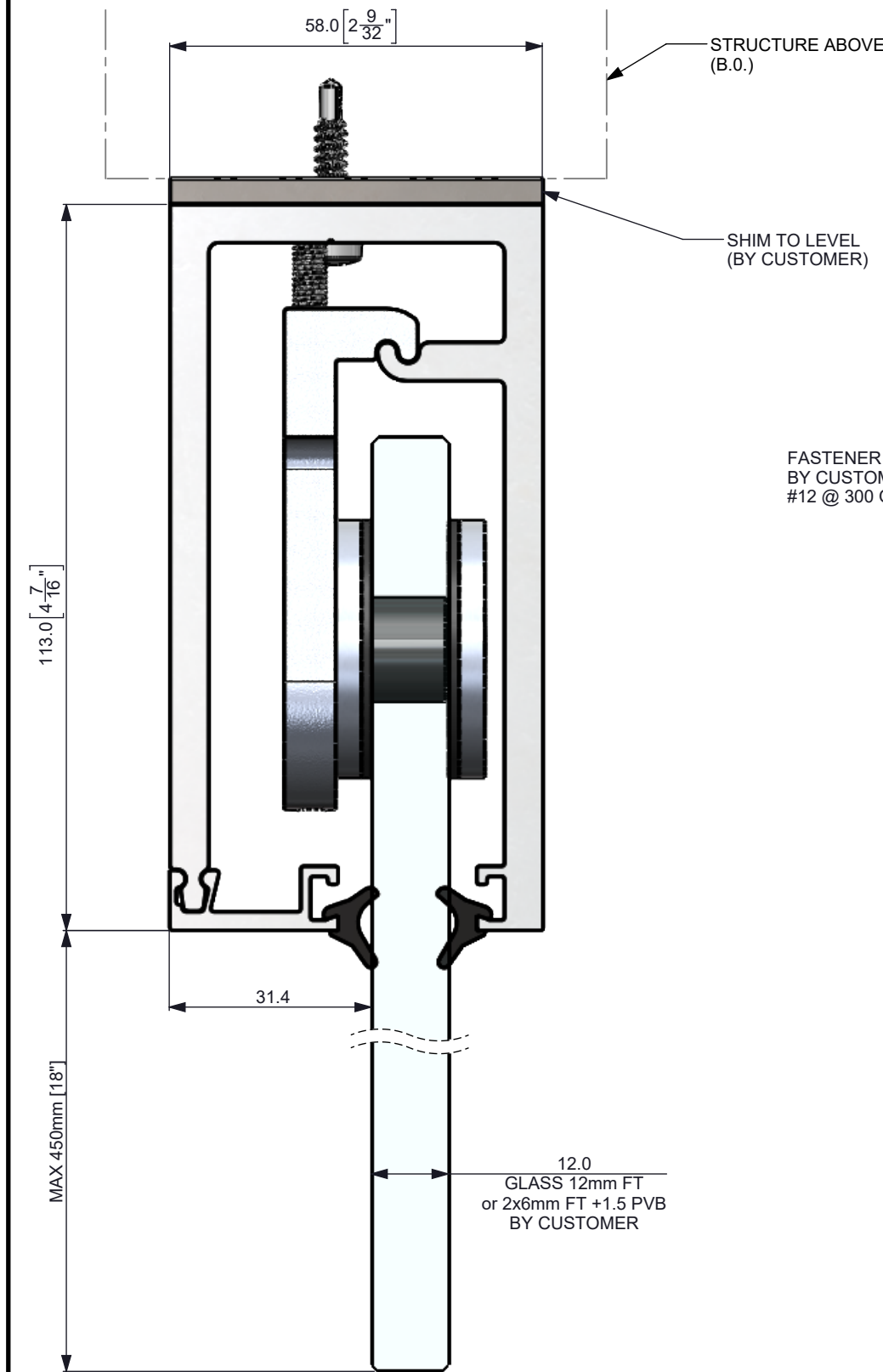
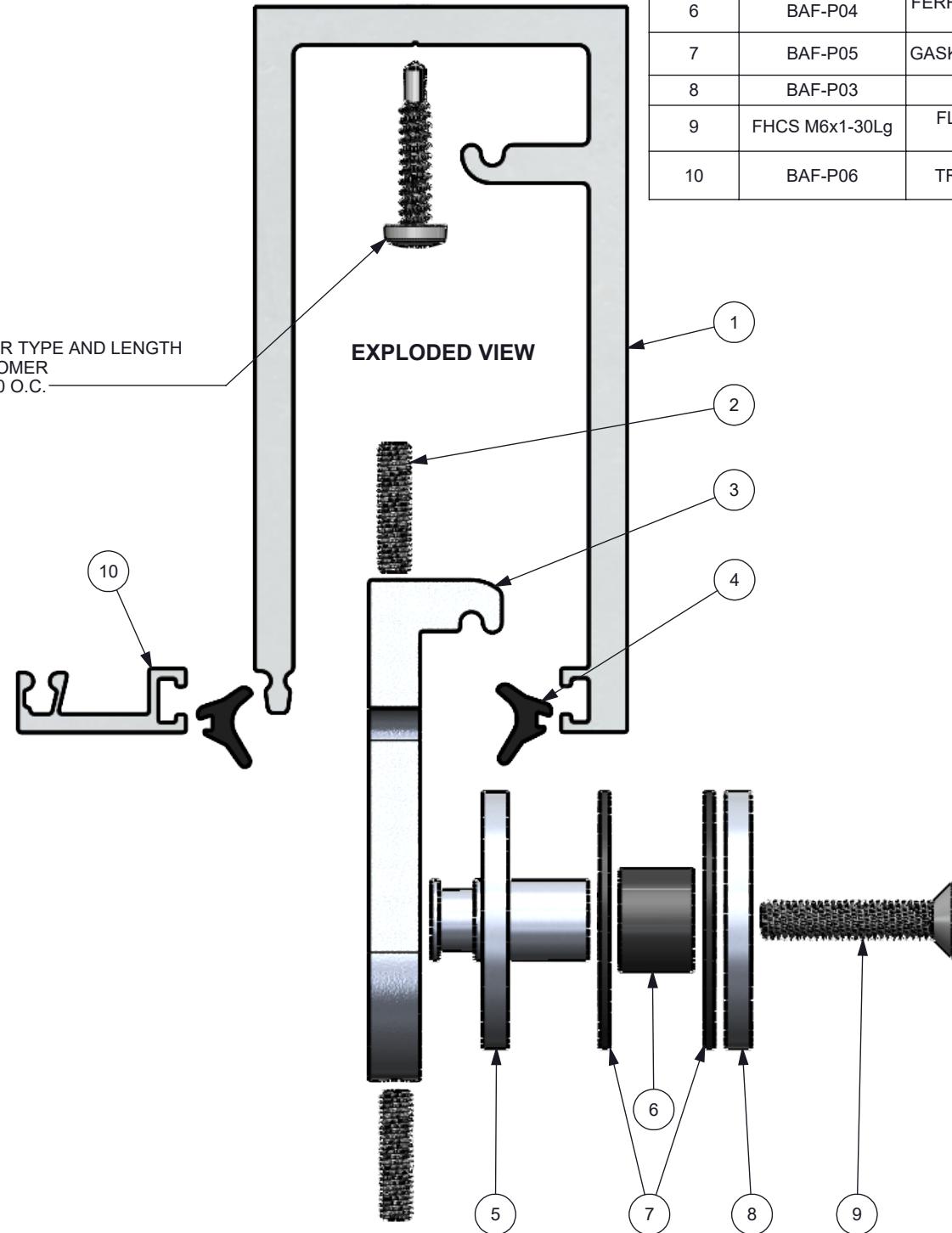


REV.	DATE	DESCRIPTION	DRAWN BY	CHECKED BY
0	2021DEC07	INITIAL RELEASE	VK	RL
A	2023MAR07	DRAWING UPDATED	VK	RL



FASTENER TYPE AND LENGTH
BY CUSTOMER
#12 @ 300 O.C.



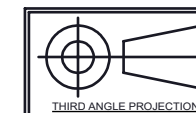
ITEM NO.	PART	DESCRIPTION	MATERIAL	FINISH	QTY. PER LENGTH
1	BAF-P01	SMOKE BAFFLE CHANNEL; 3.66m [12FT] LENGTHS; UOR	ALUMINUM 6063-T6	CLEAR ANODIZED; UOR	1
2	SS - M5x0.8-20Lg	SET SCREW M5x0.8 - 20mm LONG	A2-70 SS	EX WORKS	15
3	BAF-P02	SUSPENSION BRACKET	ALUMINUM 6061	EX WORKS	5
4	2924	GASKET 2924	EPDM	EX WORKS	7.3m
5	BAF-P03.1	SLIDING PLATE	ALUMINUM 6063-T6	MACHINED	5
6	BAF-P04	FERRULE BUSHING ID 13mm x OD 19mm x 11.5mm LONG	NYLON BLACK	MACHINED	5
7	BAF-P05	GASKET ID 13mm x OD 40m x 1.6mm THK	CG608 - FIBER - BLACK	EX WORKS	10
8	BAF-P03	CLAMP PLATE	ALUMINUM 6063-T6	MACHINED	5
9	FHCS M6x1-30Lg	FLAT HEAD CAP SCREW M6x1 - 30 LONG	A2-70 SS	EX WORKS	5
10	BAF-P06	TRIM; 3.05m [10FT] LENGTHS; UOR	ALUMINUM 6063-T6	CLEAR ANODIZED; UOR	1

NOTES:

1. "UOR" MEANS UNLESS OTHERWISE REQUESTED.

NOTES:

1. REFER PART DRAWINGS FOR PART RELATED DETAILS.
2. AVAILABLE IN 3.66m [12ft] LENGTHS
3. ALLOW TWO SUSPENSION BRACKETS PER PIECE OF GLASS. MAX GLASS LENGTH 1.5m [5ft]
4. THE DIMENSIONS SPECIFIED IN [] ARE IN INCHES.
5. ALL DIMENSIONS ARE IN "mm" METRIC UNLESS SPECIFIED.



SCALE

1:1

DWG NO.

BFA-A01



UNIT 105-8218 NORTH FRASER WAY, BURNABY, BC, V3N 0E9
TEL (604) 231 5892 WWW.STELLAGLASSHARDWARE.COM

**SMOKE BAFFLE
ASSEMBLY DRAWING**

This drawing is the property of Stella Custom Glass Hardware Inc and may not be copied or reproduced in any way whatsoever without written permission of that company