

# PERIMETER CHANNEL

## PC3710 - Long Leg Option

*Feedback from our glazing clients lead to the adaptation of our popular perimeter channel by providing a long leg on one side, typically located on the interior.*

**Easier Install** - During a typical perimeter channel install, the glazing clips can fall into the channel requiring a second installer to be inside, propping up the clips. This product's modified long leg stays in place, offering an easier install with fewer labour hours.

**Stronger Weather Performance** - Typical perimeter channels may have air leaking into the channel via the clip joint. This longer leg means no leakage through the horizontal joint on the glazing clip.

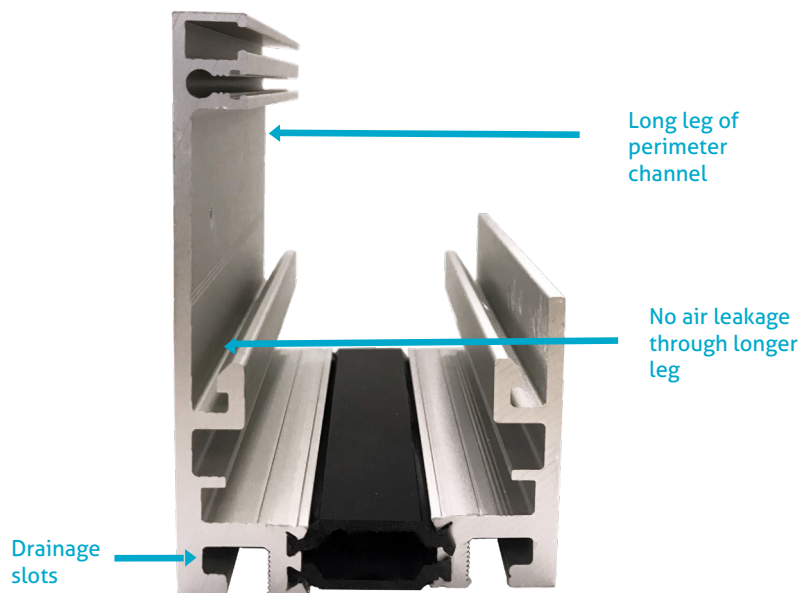
**Option to Glaze Exclusively from Exterior** - We continue to offer the side- and base-mounted options for our PC3710 perimeter channel series with this long leg variation offering another selection for thermally-broken perimeter channels. In addition to benefits outlined, this perimeter channel is suitable for situations where glazing is done from the exterior.

**Handle with Care** - During construction, the long leg will be fully or partially exposed with an increased potential to be bumped or damaged before glass is installed. Ensure to tell your site team to watch out for this.

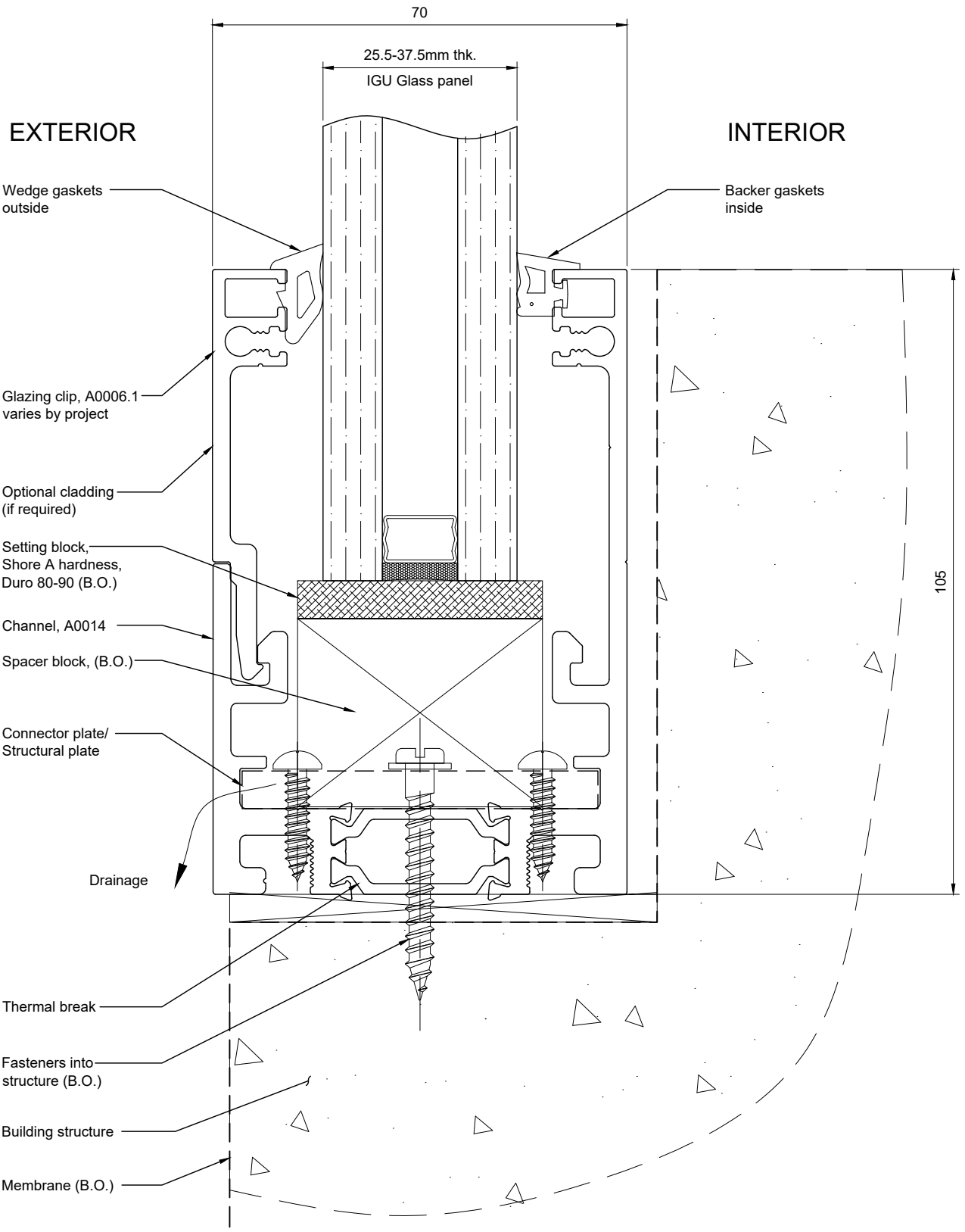
### Advantages of Stella's Perimeter Channels

- **Dry-Fit vs. Wet Silicone** - Uses dry-fitted glazing gaskets for ease of install vs. time-extensive wet silicone
- **DIY or Fully-Fabricated Package** - Can be supplied in 12ft lengths to cut on site or we can take care of all the details - pre-drilled with drainage and fixing holes with all the connection hardware
- **Glass is Supported at Edges with Shelf Brackets** - Ledge brackets set into vertical perimeter channel support glass at the wall edges
- **Large Selection of Finishes to Match Your Project** - Available in mill finish, anodized (clear, black, bronze), two-coat Duranar painted to match your paint sample, and brushed stainless steel cladding

glass thickness minimum: 25.4 mm  
glass thickness maximum: 37.5 mm



▲ PC 3710 Perimeter Channel - Side profile of long leg option



**SUBJECT TO CHANGE BY PROJECT**

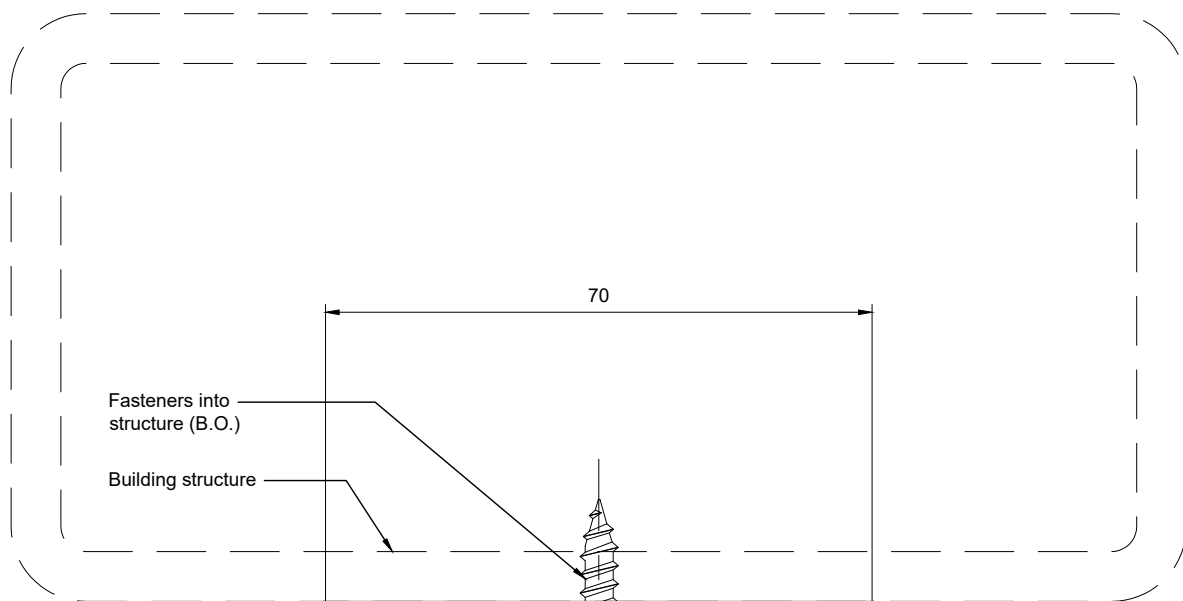
Quantity: See Purchase Order  
 Material: Aluminum 6063-T6  
 Finish: Mill unless otherwise specified

Available in the following finishes:-  
 Mill Finish (Standard)  
 Anodized  
 Painted  
 Clad with stainless steel brake shapes

Drawn	Drawn date
RL	OCT 21-2019
Checked	Checked date
-	-
Scale	Rev.
1:1	0
DWG No	
PC3710TB-A05	

[t] (604) 231 5892  
 [f] (604) 231 5893  
 [e] info@stellaglasshardware.com

**THERMALLY BROKEN PERIMETER CHANNELS  
 for SEALED GLASS UNITS UP TO 37mm THICK  
 SILL DETAIL - BOTTOM MOUNTED - LONG LEG**



Fasteners into structure (B.O.)  
Building structure

70

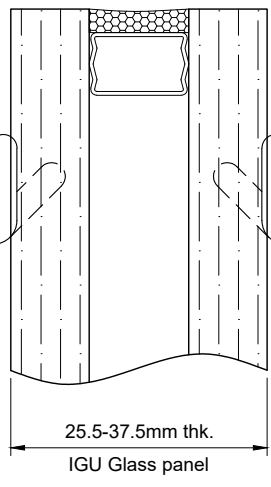
Thermal break  
Connector plates  
Channel, A0005

DEFLECTION MOVEMENT UP TO 50mm

Optional cladding (if required)  
Glazing clip, A0006.1 varies by project

Kerf seal both sides

105



25.5-37.5mm thk.  
IGU Glass panel

**SUBJECT TO CHANGE BY PROJECT**

Quantity: See Purchase Order  
Material: Aluminum 6063-T6  
Finish: Mill unless otherwise specified

Available in the following finishes:-  
Mill Finish (Standard)  
Anodized  
Painted  
Clad with stainless steel brake shapes

Drawn	Drawn date
RL	OCT 21-2019
Checked	Checked date
-	-
Scale	Rev.
1:1	0
DWG No	
PC-3710TB-A06	

**stella**  
[t] (604) 231 5892  
[f] (604) 231 5893  
[e] info@stellaglasshardware.com

**THERMALLY BROKEN PERIMETER CHANNELS  
for SEALED GLASS UNITS UP TO 37mm THICK  
HEAD DETAIL - TOP MOUNTED - ONE LONG LEG**