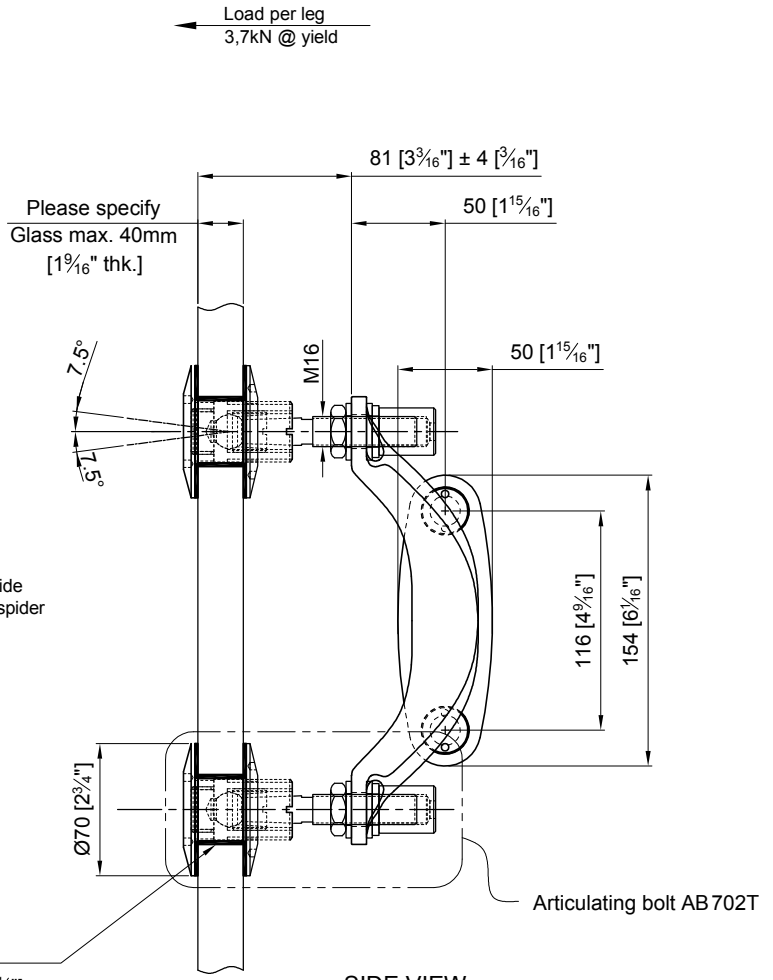


FRONT VIEW



SIDE VIEW

Please specify  
Steel or glass thk.  
100 [3 15/16"]

Please specify  
Glass max. 40mm  
[1 15/16" thk.]

M12 Stud  
Back nut, NB4-P11

SS202SV Two arm side  
mounted "V" shaped spider

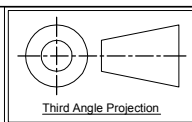
Articulating bolt AB 702T

Thru hole in glass:  
min: Ø38.1mm [Ø1 1/2"]  
recommended in laminate: Ø41.3mm [Ø1 5/8"]  
max: Ø44.5mm [Ø1 3/4"]

APPROVAL
DATE

Quantity: Sets  
Material: Grade 304/316 Stainless steel  
Finish: Spider: Satin; Glass bolt: Machined

Hole in glass see above  
Dimensions millimeter unless otherwise shown  
Apply loctite 243 to all threads during assembly  
(To increase curing speed, please apply activator 7649)  
Details are typical and are subject to change to meet project requirement



Drawn	Drawn date
JH	APR 26-2013
Approved	Approved date
-	-
Scale	Rev.
1:4	-
DWG No	
SS204SV-AB702T	

**stella**  
[t] (604) 231 5892  
[f] (604) 231 5893  
[e] info@stellaglasshardware.com

ASSEMBLY DRAWING  
TWO SS202SV "V" SHAPED SIDE MOUNTED SPIDER W/ ARTICULATING BOLT AB702T