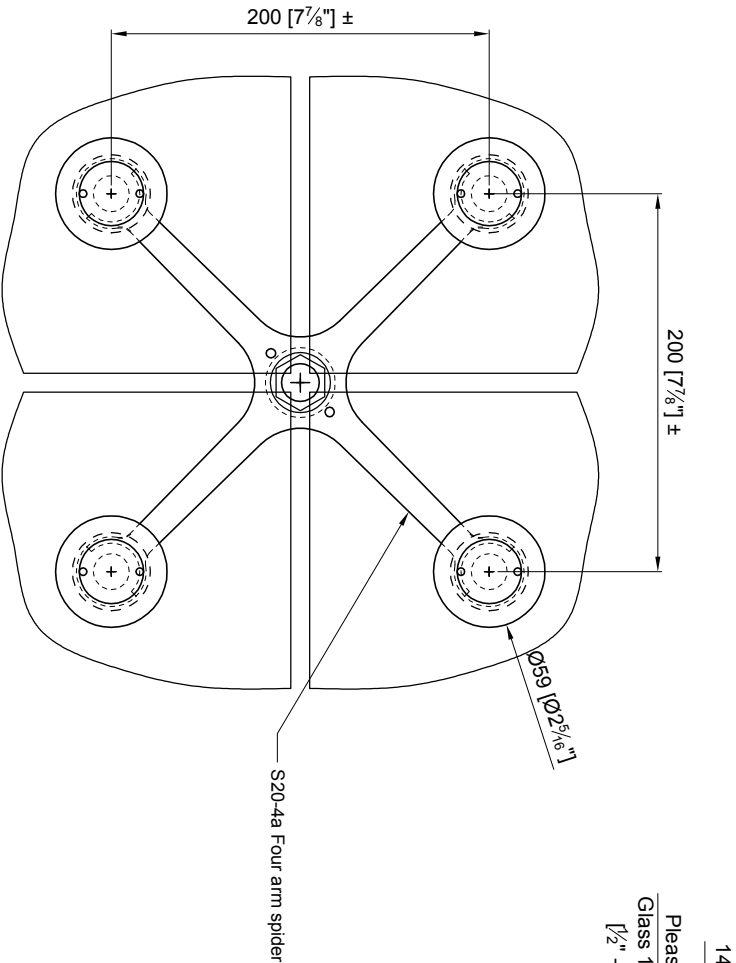
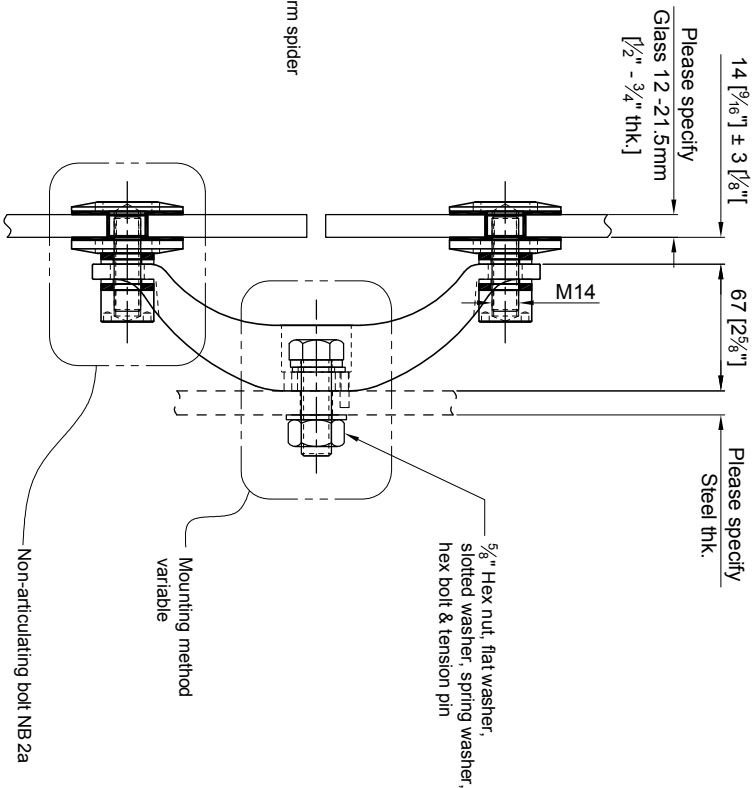


Load per leg
1.5KN @ yield

Load per leg
3.7KN @ yield



FRONT VIEW

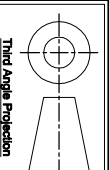


SIDE VIEW

APPROVAL
DATE

Quantity: Sets
Material: Grade 304/316 Stainless steel
Finish: Spider: Satin; Glass bolt: Machined

Hole in glass min. $\varnothing 22.2\text{mm}$ [$\varnothing 7/8\"$]
Dimensions millimeter unless otherwise shown
Apply loctite 243 to all threads during assembly
(To increase curing speed, please supply activator 7649).
Details are typical and are subject to change to meet project requirement



Drawn	Drawn date
JH	NOV 18-09
Approved	Approved date
RL	NOV 18-09
Scale	Rev.
1:4	-

ASSEMBLY DRAWING
S20-4a SPIDER W/ NON-ARTICULATING BOLT NB2a
FORMALLY S20-4a-NB2a

DWG No
SS204FT-NB601T

custom glass hardware Inc
 [t] (604) 231 5892
 [f] (604) 231 5893
 [e] sales@stellassemblies.com

This drawing is the property of Stella Custom Glass Hardware Inc and may not be copied or reproduced in any way whatsoever without written permission of that company