

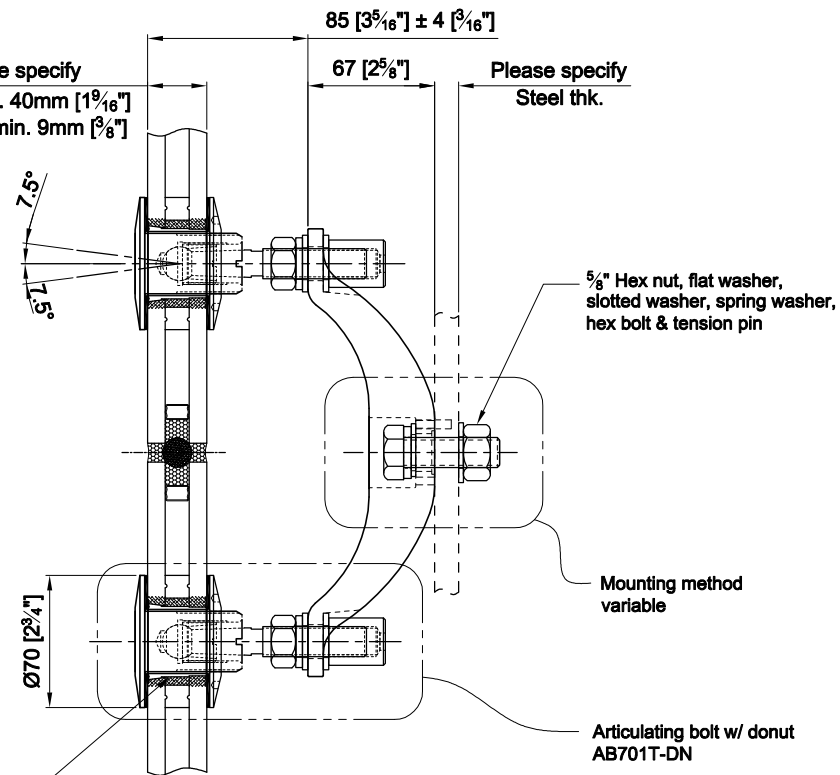
FRONT VIEW

SS202FV Two arm "V" shaped spider

Please specify
Glass max. 40mm [1 9/16]
Outer lite min. 9mm [3/8]

Ø47.6 [Ø1 7/8]
thru hole in glass

Load per leg
3,7kN @ yield



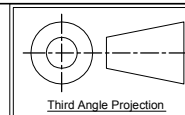
SIDE VIEW

APPROVAL

DATE

Quantity: Sets
Material: Grade 304/316 Stainless steel
Finish: Spider: Satin; Glass bolt: Machined

Hole in glass see above
Dimensions millimeter unless otherwise shown
Apply loctite 243 to all threads during assembly
(To increase curing speed, please apply activator 7649)
Details are typical and are subject to change to meet project requirement



Drawn	Drawn date
JH	APR 25-2013
Approved	Approved date
-	-
Scale	Rev.
1:4	-
DWG No	
SS202FV-AB701T-DN	

 **stella**
[t] (604) 231 5892
[f] (604) 231 5893
[e] info@stellaglasshardware.com

ASSEMBLY DRAWING
SS202FV "V" SHAPED SPIDER W/ ARTICULATING BOLT W/ DONUT AB701T-DN
FOR INSULATED GLASS UNITS (10 / 12.7 / 10)