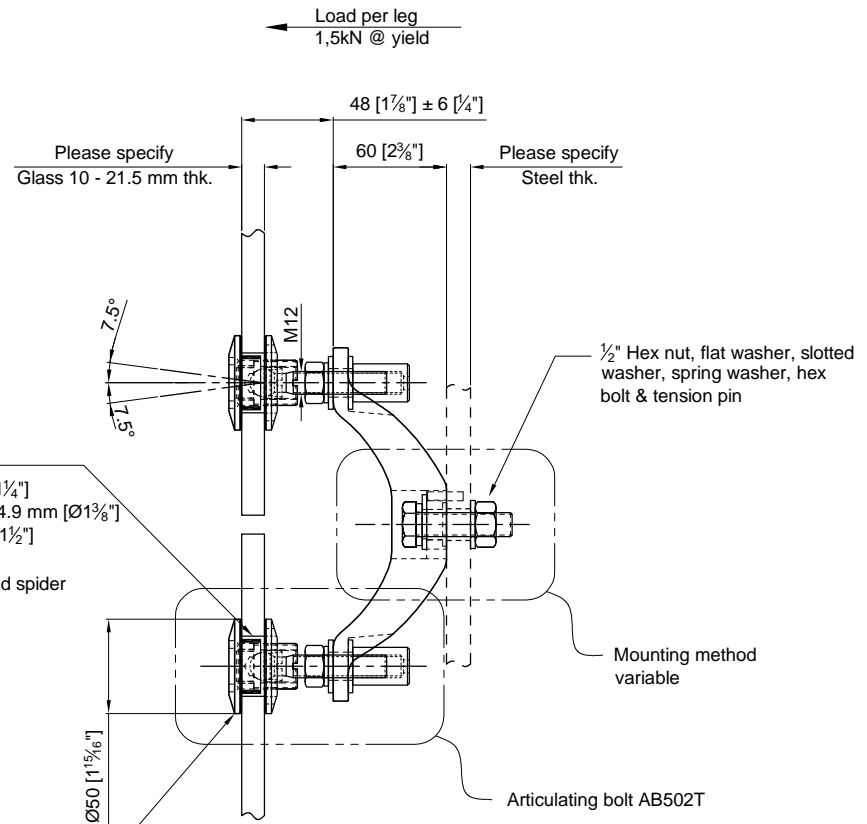


FRONT VIEW



SIDE VIEW

Thru hole in glass:
 min: Ø31.8 mm [Ø1 1/4"]
 recommended: Ø34.9 mm [Ø1 3/8"]
 max: Ø38.1 mm [Ø1 1/2"]

SS152FV Two arm "V" shaped spider

Removable face plate

1/2" Hex nut, flat washer, slotted washer, spring washer, hex bolt & tension pin

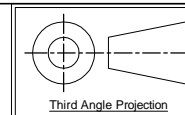
Mounting method variable

Articulating bolt AB502T

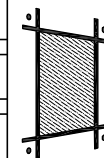
APPROVAL
DATE

Quantity: Sets
 Material: Grade 316 Stainless steel
 Finish: Spider: Satin; Glass bolt: Machined

Hole in glass see above
 Dimensions millimeter unless otherwise shown
 Apply loctite 243 to all threads during assembly
 (To increase curing speed, please apply activator 7649)
 Details are typical and are subject to change to meet project requirement



Drawn	Drawn date
JH	JAN 22-2013
Approved	Approved date
Scale	Rev.
1:4	-
DWG No	
SS152FV-AB502T	



stella

[t] (604) 231 5892
 [f] (604) 231 5893
 [e] info@stellaglasshardware.com

ASSEMBLY DRAWING
 SS152SV TWO ARM "V" SHAPED SPIDER W/ FACE MOUNTED ARTICULATING BOLT AB502T