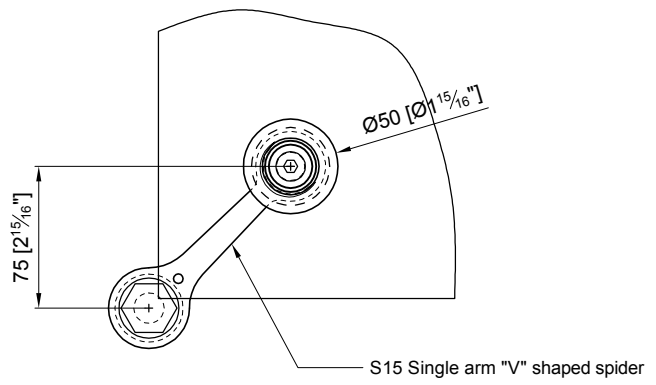
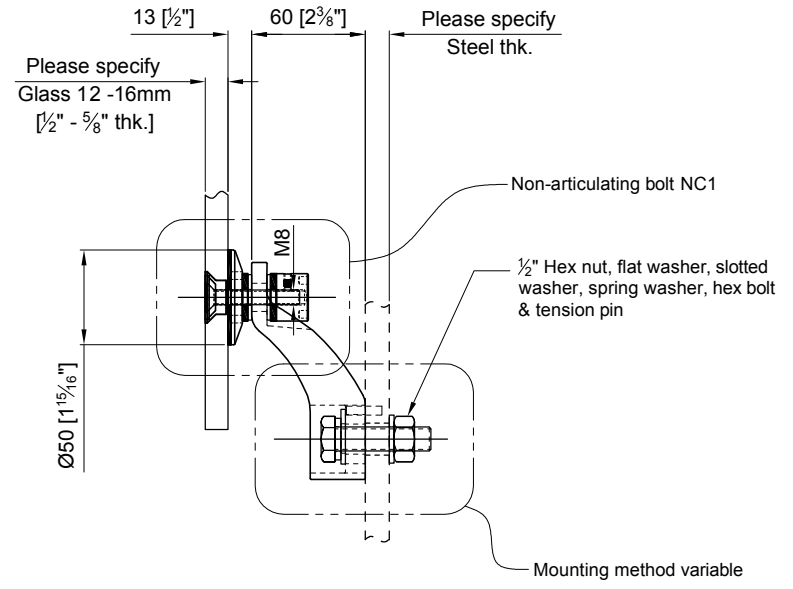


Load per leg  
0,8kN @ yield

Load per leg  
1,5kN @ yield



FRONT VIEW

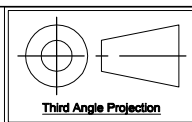


SIDE VIEW

APPROVAL
DATE

**Quantity:** Sets  
**Material:** Grade 304/316 Stainless steel  
**Finish:** Spider: Satin; Glass bolt: Machined

Hole in glass Ø19.1 [3/4] & Csk to suit ferrule bushing NC1-P04  
Dimensions millimeter unless otherwise shown  
Apply loctite 243 to all threads during assembly  
(To increase curing speed, please apply activator 7649)  
Details are typical and are subject to change to meet project requirement



Drawn	Drawn date
JH	JAN 6-2010
Approved	Approved date
RL	JAN 6-2010
Scale	Rev.
1:4	-
DWG No	
SS151FV-NB501C	

**stella**  
custom glass hardware Inc  
t] (604) 231 5892  
f] (604) 231 5893  
e] sales@stellassemblies.com

ASSEMBLY DRAWING  
S15-1Va "V" SHAPED SPIDER W/ NON-ARTICULATING BOLT NC1  
FORMALLY S15-1Va-NC1