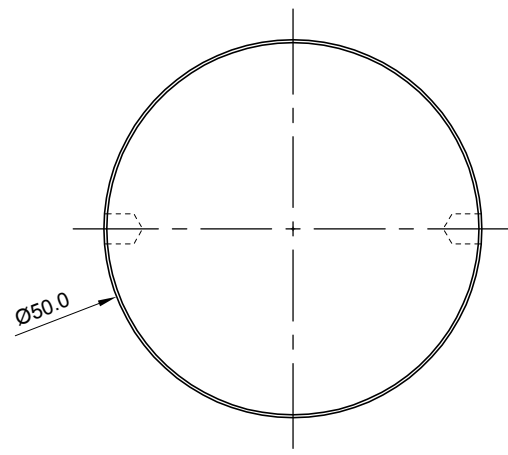
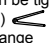


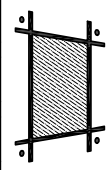
Hole in glass
 min. $\text{Ø}22.2\text{mm}$ [$\text{Ø}7/8"$]
 recommend $\text{Ø}25.4\text{mm}$ [$\text{Ø}1"$]
 max. $\text{Ø}28.6\text{mm}$ [$\text{Ø}1\frac{1}{8}"$]



Quantity: Sets
 Material: Grade 304/316 Stainless steel
 Finish: Machined

Hole in glass see above
 Dimensions millimeter unless otherwise shown
 Loctite all threads during final assembly
 4mm hole can be tighten w/ adjustable pin spanner
 (Ref. SPA-01) 
 Subject to change

Drawn	Drawn date
JH	OCT 26-09
Checked	Checked date
RL	OCT 26-09
Scale	Rev.
1:1	-
DWG No	
NB505F	



stella

[t] (604) 231 5892
 [f] (604) 231 5893
 [e] info@stellaglasshardware.com

ASSEMBLY DRAWING
NON-ARTICULATING BOLT NB4 W/ FLAT FRONT PLATE
FORMERLY NB4-A11