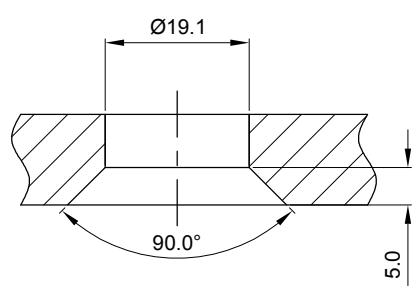
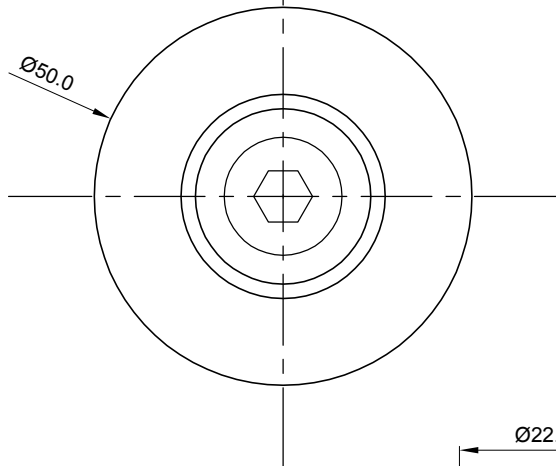
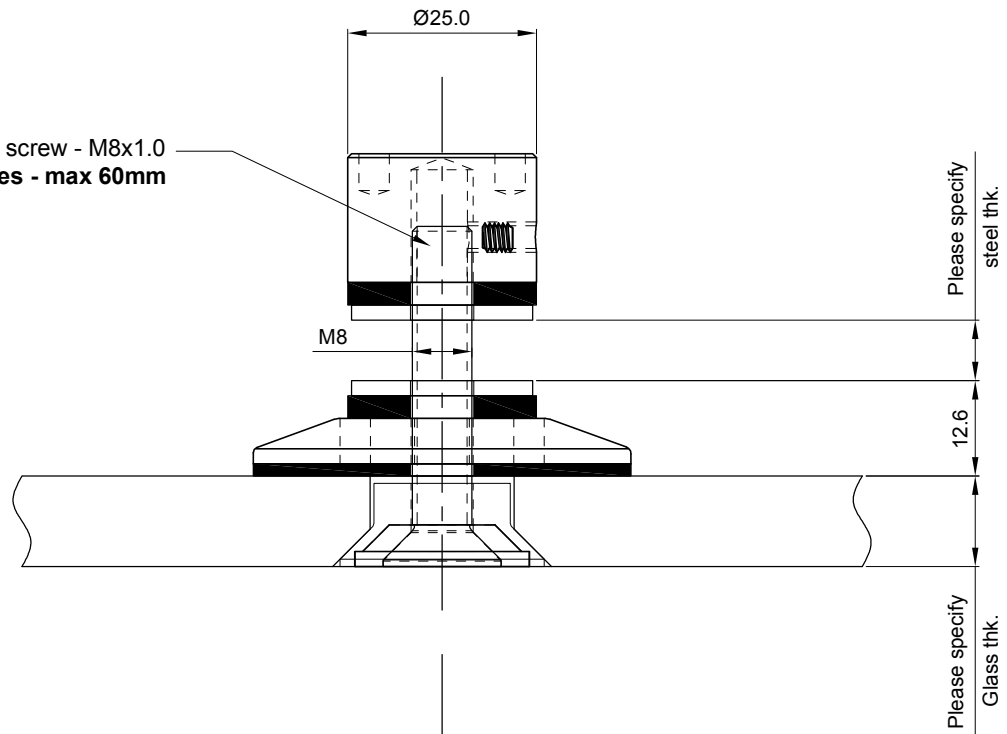
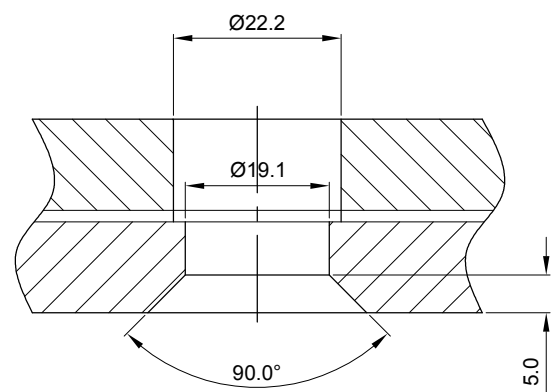


Flat head cap screw - M8x1.0
 *Length varies - max 60mm



Hole details - monolithic

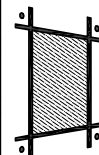


Hole details - laminate

Quantity:
 Material: Grade 304/316 Stainless steel
 Finish: Machined

Hole in glass Ø19.1 [$\frac{3}{4}$] & Csk to suit ferrule bushing NC1-P04
 Dimensions millimeter unless otherwise shown
 Loctite all threads during final assembly
 4mm hole can be tighten w/ adjustable pin spanner
 (Ref. SPA-01)
 Subject to change

Drawn	Drawn date
RL	MAR 29-06
Checked	Checked date
Scale	Rev.
1:1	-
DWG No	
NB501C	



stella

[t] (604) 231 5892
 [f] (604) 231 5893
 [e] info@stellaglasshardware.com

ASSEMBLY DRAWING
NON-ARTICULATING BOLT NB501C
FORMERLY NC1