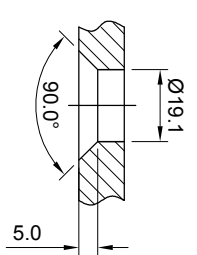
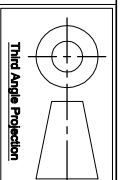


**Quantity:** Sets  
**Material:** Grade 304/316 Stainless steel; Please specify  
**Finish:** Machined

@ Doc - Hole in glass min. Ø15.9mm [Ø $\frac{5}{8}$ "]  
 @ Pin - Hole in glass/steel min. Ø22.2mm [Ø $\frac{7}{8}$ "] Ø12.7 [Ø $\frac{1}{2}$ "]  
 Dimensions millimeter unless otherwise shown  
 Apply locite 243 to all threads during assembly  
 (To increase curing speed, please apply activator 7649)  
 Details are typical and are subject to change to meet project requirement



**ASSEMBLY DRAWING**  
**SINGLE POINT ARTICULATING DOC & PIN FITTING WITH COUNTERSUNK INSERT**

**APPROVAL**  
 \_\_\_\_\_  
**DATE**  
 \_\_\_\_\_

Drawn	Drawn date
JH	JUNE 14 2011
Approved	Approved date
-	-
Scale	Rev.
1:2	-
DWG No. DP5041CM	

(604) 231 5892  
 (604) 231 5893  
 info@stellahardware.com

*This drawing is the property of Stella Custom Glass Hardware Inc and may not be copied or reproduced in any way whatsoever without written permission of that company*