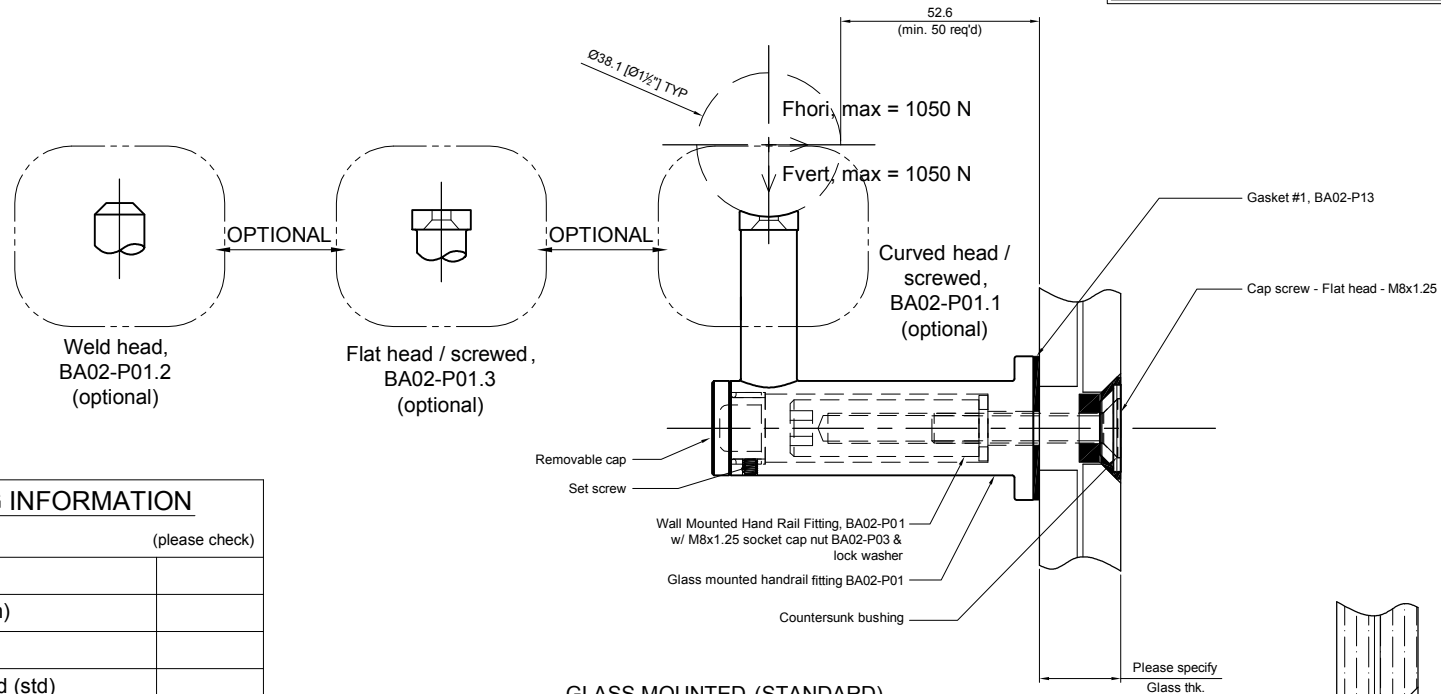
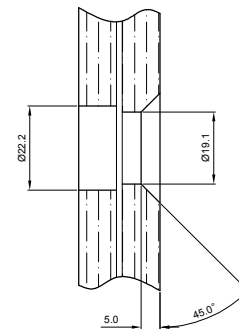


**This Handrail Fitting meets the requirements of the National Building Code of Canada 2005, Div B, Section 3.4.6.4.**

Allowable loads are for distance between fittings of up to 1.5 m.



**GLASS MOUNTED (STANDARD)**



**DETAIL OF COUNTERSUNK HOLE**

**ORDERING INFORMATION**

(please check)

Glass mounted (std)	
Post mounted (option)	
Curved head/screwed (std)	
Flat head/screwed (option)	
Weld head (option)	

Glass thickness \_\_\_\_\_ mm

If screw to be included, pls specify:  
(2) Rail screws  
#10 \_\_\_\_\_

CUSTOMER APPROVAL

(PLEASE SIGN)

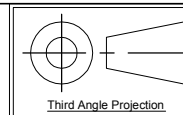
DATE:

APPROVAL

DATE

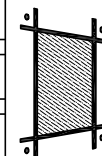
Quantity: Sets  
Material: Grade 304/316 Stainless steel  
Finish: Satin

Hole in glass Ø19.1 [¾"] & Csk to suit ferrule bushing NC1-P04  
Dimensions millimeter unless otherwise shown  
Apply loctite 243 to all threads during assembly  
(To increase curing speed, please apply activator 7649)  
Details are typical and are subject to change to meet project requirement



Third Angle Projection

Drawn	Drawn date
JH	MAR-30-11
Approved	Approved date
RL	
Scale	Rev.
1:2	
DWG No	
BA382C	



**stella**

[t] (604) 231 5892  
[f] (604) 231 5893  
[e] info@stellaglasshardware.com

**ASSEMBLY DRAWING  
COUNTERSUNK HANDRAIL FITTING**