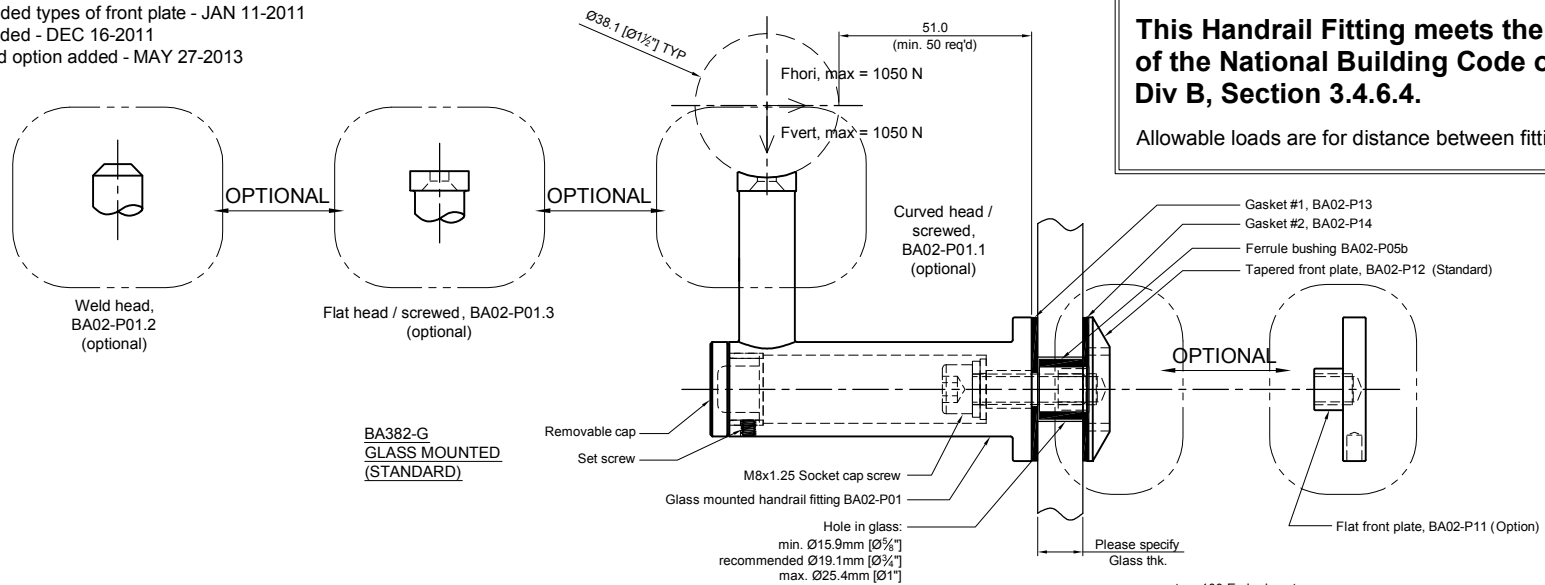


REV 1 - Changed & added types of front plate - JAN 11-2011
 REV 2 - Wall mount added - DEC 16-2011
 REV 3 - Wood mounted option added - MAY 27-2013

This Handrail Fitting meets the requirements of the National Building Code of Canada 2005, Div B, Section 3.4.6.4.

Allowable loads are for distance between fittings of up to 1.5 m.



ORDERING INFORMATION

(please check)

Glass mounted (std)	
Wall mounted (option)	
Post mounted (option)	
Curved head/screwed (std)	
Flat head/screwed (option)	
Weld head (option)	
Tapered front cap (std)	
Flat front-cap (option)	

Glass thickness ____ mm
 If screw to be included, pls specify:
 (2) Rail screws #10 _____

CUSTOMER APPROVAL

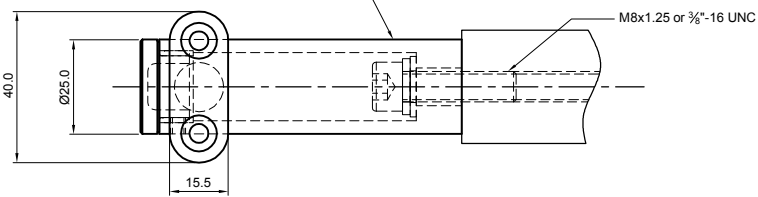
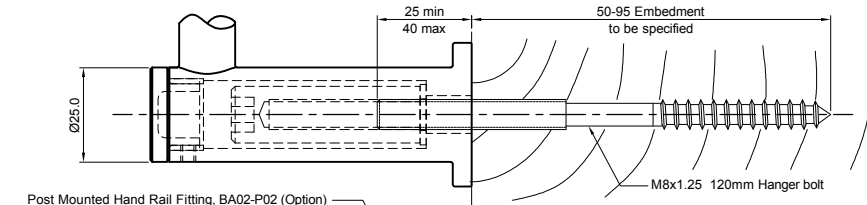
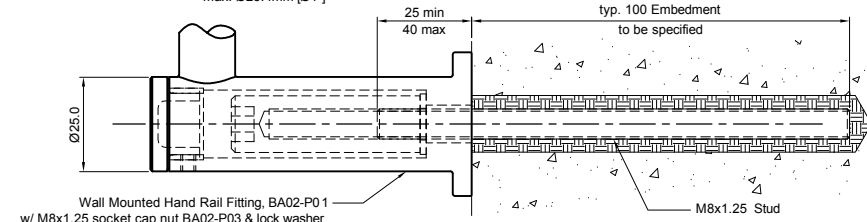
(PLEASE SIGN)

DATE:

**BA382-D
 WALL MOUNTED
 (OPTION)**

**BA382-W
 WOOD MOUNTED
 (OPTION)**

**BA382-S
 POST MOUNTED
 (OPTION)**

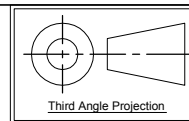


APPROVAL

DATE

Quantity:
 Material: Grade 304/316 Stainless steel
 Finish: Satin

Dimensions millimeter unless otherwise shown
 Apply locite 243 to all threads during assembly
 (To increase curing speed, please apply activator 7649)
 Details are typical and are subject to change to meet project requirement



Drawn	Drawn date
JH	FEB 5-2010
Approved	Approved date
JS	FEB 5-2010
Scale	Rev.
1:2	3
DWG No	BA382

[t] (604) 231 5892
 [f] (604) 231 5893
 [e] info@stellaglasshardware.com

**ASSEMBLY DRAWING
 HANDRAIL FITTING - BA382
 FORMERLY BA02**