

PC3710 Thermally Broken Perimeter Channel

Beginning as a companion part to Stella's structural glass walls, the details of our perimeter channels have led to their popularity as a stand-alone glazing solution with options available for a variety of glass thicknesses.

The key features of this dry-glazed system include removable glazing clip (ease of install/removal and replacement of glass).

This PC3710 option offers strong thermal performance for exterior applications.

Dry fit gaskets

*(variable to suit range of glass thicknesses)
(not shown - allows in plane movement))*

Removable glazing clip

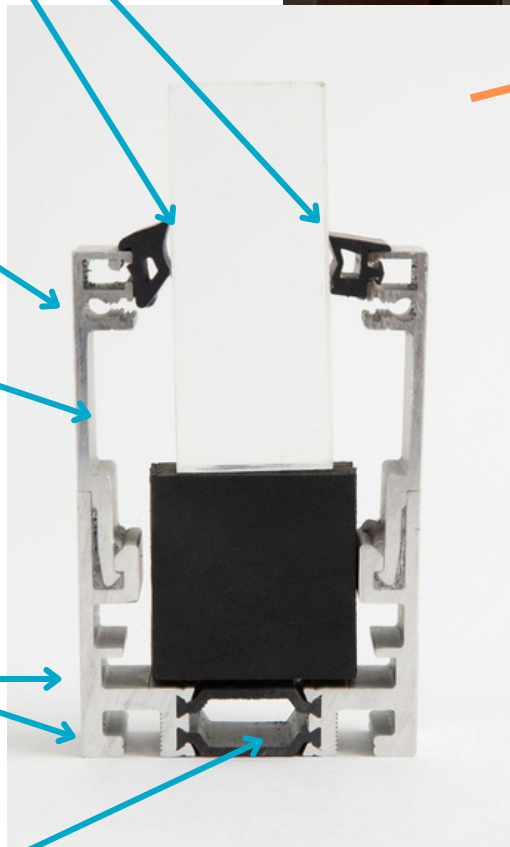
*(Clip is 50mm [2"] high)
(Overall height - 105mm [4-1/8"])*

Setting block

Drainage slots

(weather performance if needed)

Thermal Break



PRODUCT DATA SHEET

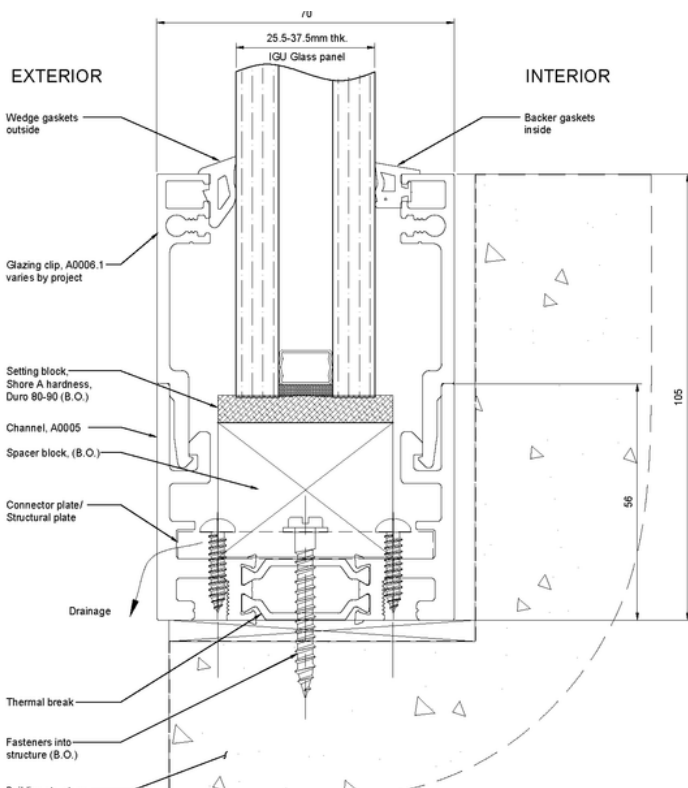


PC3710 Thermally Broken Perimeter Channel

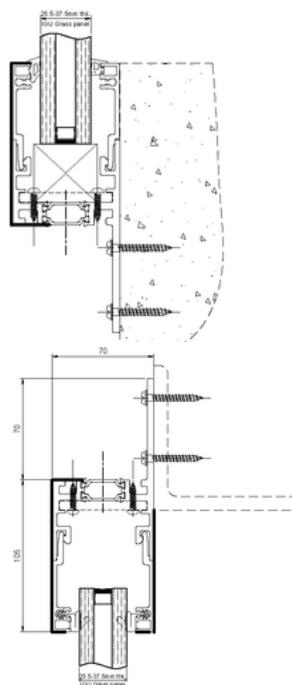
Specifications

- Section: 08-Products - 08 88 00: Special Function Glazing
- Materials:
 - Channel: 6063-T5 Aluminum
 - Interior/Backer Gasket: 60 Durometer EPDM with Cord
 - Exterior/Wedge Gasket: 70 Durometer EPDM
 - Setting Block: Acetal delrin
- Mount Type: Vertical mount on top of or base of OR flush with finished surfaces
- Mounting Structures: Concrete, steel or wood (by others)
- Infill: Glass Thickness of 25.5 to 37.5mm [1" to 1 1/2"]
- Finish Options: Mill, anodized, painted, powder-coated, and/or brushed stainless steel cladding
- LEED Standards:
 - Aluminum (primary material) - 25% pre-/90% post- consumer recycled content by weight
- Compliances/Standards: Project specific
- Warranty: 2 year limited warranty* (can be project specific)

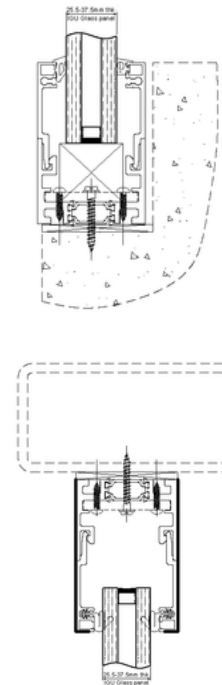
Mounting Options



Face Mount



Base Mount



Base Mount (Long Leg)

