

PERIMETER CHANNEL

PC2110/PC2910/PC3710/PC4510

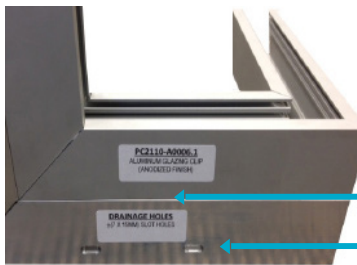
Beginning as a companion part to Stella's structural glass walls, the labour-saving details of our perimeter channels have led to their popularity as a stand-alone glazing solution.

How Stella Perimeter Channels Reduce On-Site Labour Hours

- Dry-fitted glazing gaskets - no waiting for wet silicone to cure
- Glazing clips - glass is positioned first, then clipped in place
- Easy connection - pieces slide into each other, then screw together
- DIY or fully-fabricated package - Can be supplied in 12ft lengths to cut on site or we can take care of all the details - cut to length and pre-drilled with drainage and fixing holes, complete with all the connection hardware included
- Ledge brackets - Optional inserted shelf brackets eliminate the need for spider fittings at wall edges and allow the glass to be stacked without transferring loads to the panel below

Notable Features

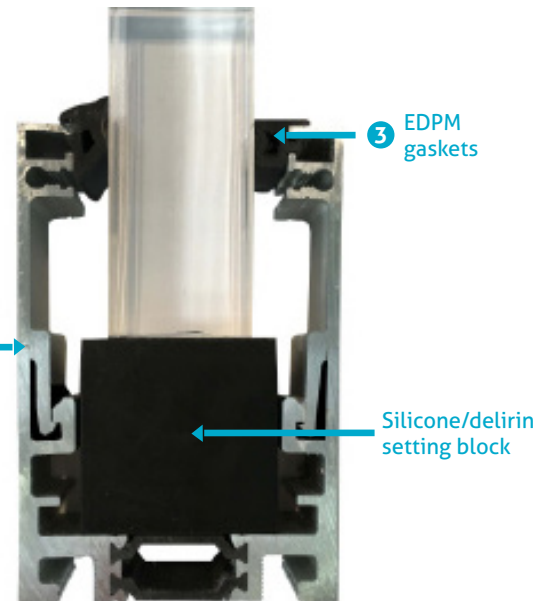
- 1 Clean joint connections at horizontal, vertical and corner junctions
- 2 Drainage slots for weather performance
- 3 Large gasket selection to accommodate varying glass thicknesses (kerf seal gaskets can also allow in plane movement of the glass)
- 4 Made of 6061-T6 aluminum - specifically sourced for T6's hardness and structural strength
Large selection of finishes including mill, anodized (clear, black, bronze), two-coat Duranar paint matched to your sample, and brushed stainless steel cladding



PC2110
Non-Thermally Broken



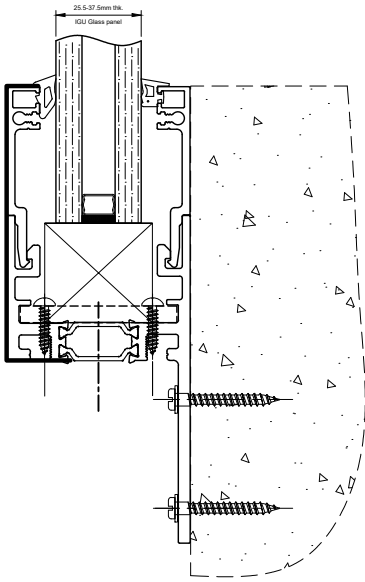
PC3710
Thermally Broken



System Options

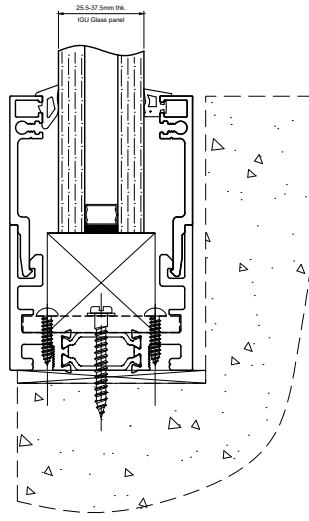
- Bottom and side-mount option available for all Stella perimeter channel systems
- Non-Thermally Broken - PC2110 Series (Standard)
Accommodate glass thicknesses - 10mm to 21.5mm
- Thermally Broken - PC2910 Series (Non-standard)
Accommodate glass thicknesses - 25mm to 29mm
- Thermally Broken - PC3710 Series (Standard)
Accommodate glass thicknesses - 25.5mm to 37.5mm
- Thermally Broken - PC4510 Series (Non-standard)
Accommodate glass thicknesses - 43.5mm to 45.5mm

Side Mounted



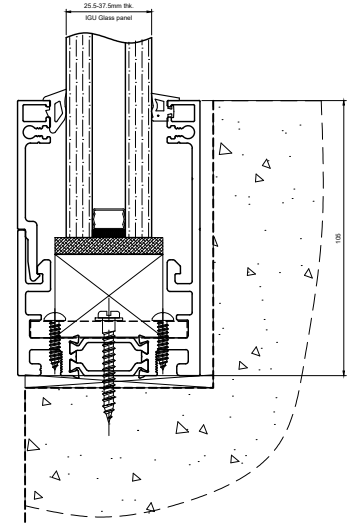
PC3710TS-A01

Base Mounted



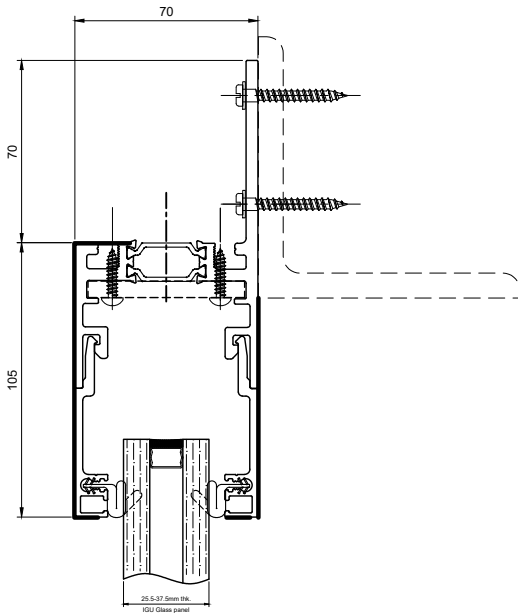
PC3710TB-A01

Base Mounted - One Long Leg

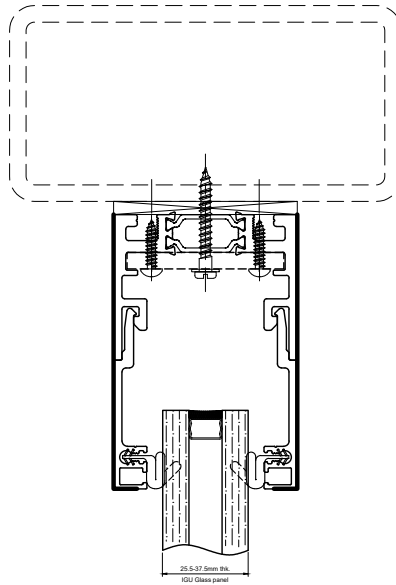


PC3710TB-A05

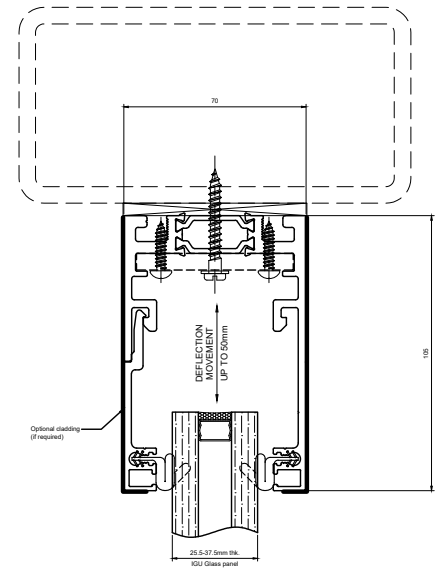
Sill Details



PC3710TS-A02



PC3710TB-A02



PC3710TB-A06

Head Details

Quantity: See Purchase Order
 Material: Aluminum 6063-T6
 Finish: Mill unless otherwise specified

**THERMALLY BROKEN PERIMETER CHANNELS
 for SEALED GLASS UNITS UP TO 37.5mm THICK
 PC-3710 SERIES**

Drawn	Drawn date
VK	SEP 15, 2020
Checked	Checked date
-	-
Scale	Rev.
1:3	0
DWG No	
PC-3710 SERIES	

stella
 [t] (604) 231 5892
 [f] (604) 231 5893
 [e] info@stellaglasshardware.com

EXTERIOR

INTERIOR

70

25.5-37.5mm thk.

IGU Glass panel

Wedge gaskets outside

Backer gaskets inside

Glazing clip, A0006.1 varies by project

Setting block, Shore A hardness, Duro 80-90 (B.O.)

Channel, A0005

Spacer block, (B.O.)

Connector plate/ Structural plate

Drainage

Thermal break

Fasteners into structure (B.O.)

Building structure

Membrane (B.O.)

105

140

SUBJECT TO CHANGE BY PROJECT

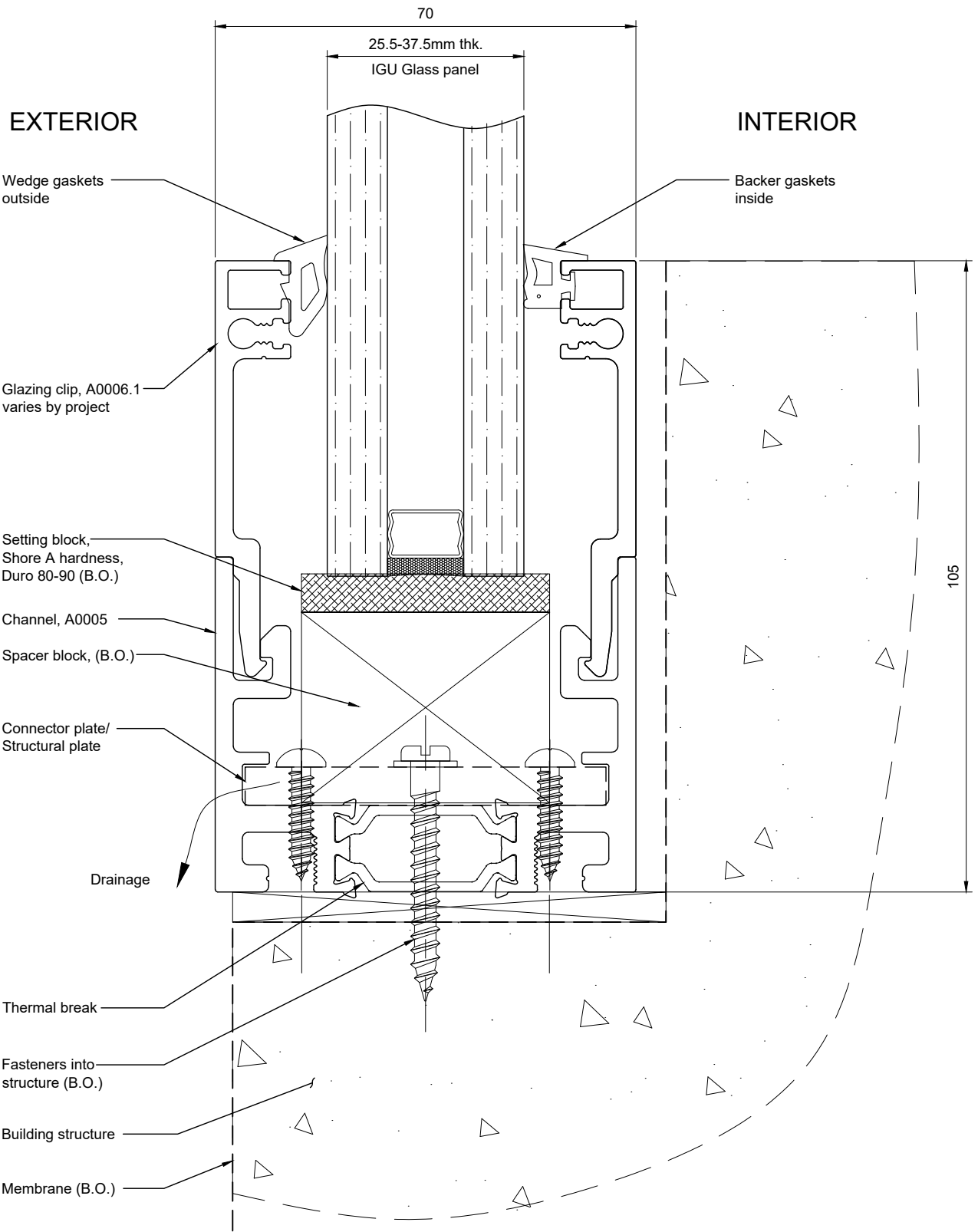
Quantity: See Purchase Order
Material: Aluminum 6063-T6
Finish: Mill unless otherwise specified

Available in the following finishes:-
Mill Finish (Standard)
Anodized
Painted
Clad with stainless steel brake shapes

Drawn	Drawn date
RL	APR 07-2014
Checked	Checked date
-	-
Scale	Rev.
1:1	0
DWG No	
PC-3710TS-A01	



**THERMALLY BROKEN PERIMETER CHANNELS
for SEALED GLASS UNITS UP TO 37mm THICK
SILL DETAIL - FACE MOUNTED**



SUBJECT TO CHANGE BY PROJECT

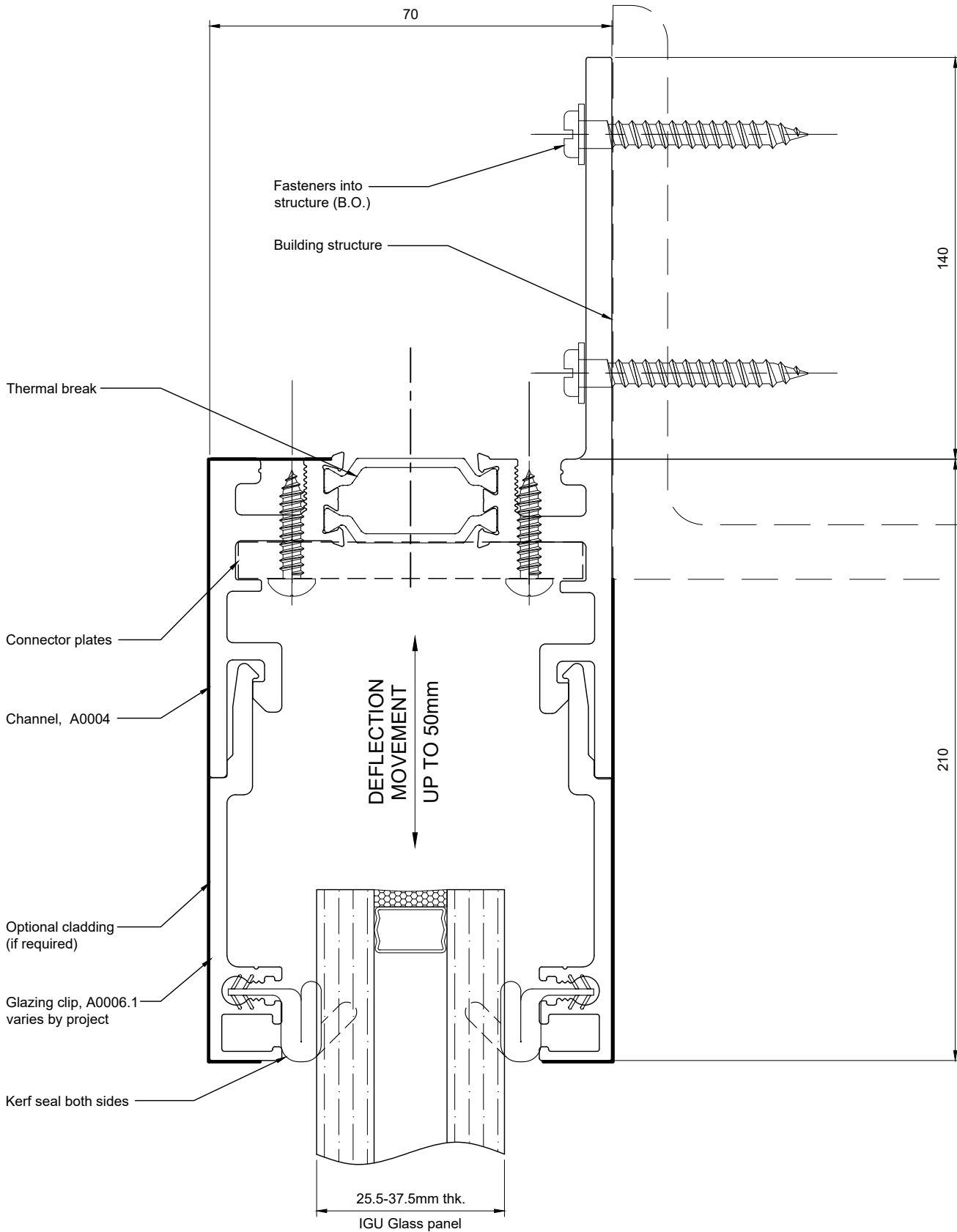
Quantity: See Purchase Order
 Material: Aluminum 6063-T6
 Finish: Mill unless otherwise specified

Available in the following finishes:-
 Mill Finish (Standard)
 Anodized
 Painted
 Clad with stainless steel brake shapes

Drawn	Drawn date
RL	APR 07-2014
Checked	Checked date
-	-
Scale	Rev.
1:1	0
DWG No	
PC3710TB-A01	

[t] (604) 231 5892
 [f] (604) 231 5893
 [e] info@stellaglasshardware.com

**THERMALLY BROKEN PERIMETER CHANNELS
 for SEALED GLASS UNITS UP TO 37mm THICK
 SILL DETAIL - BOTTOM MOUNTED**



SUBJECT TO CHANGE BY PROJECT

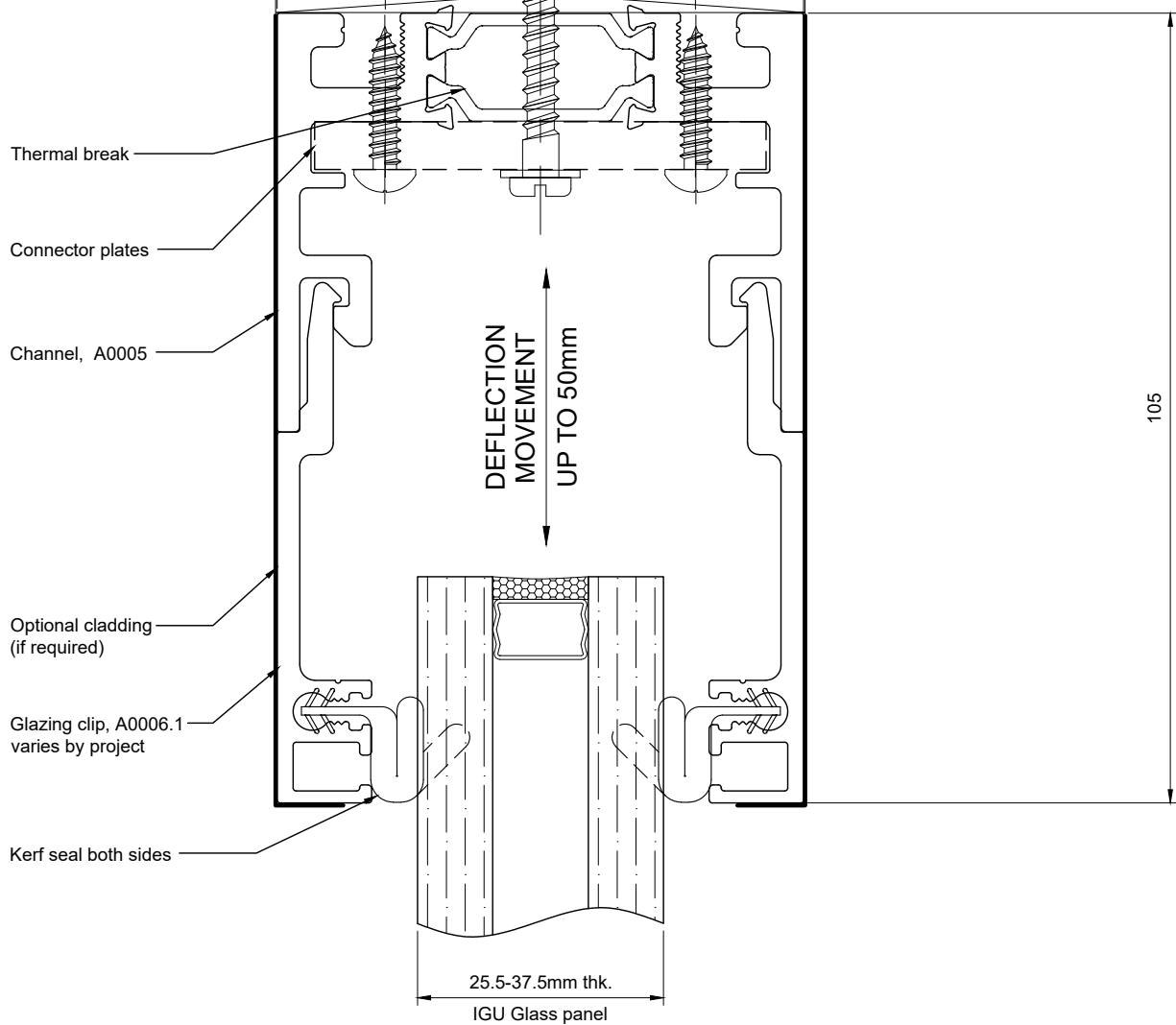
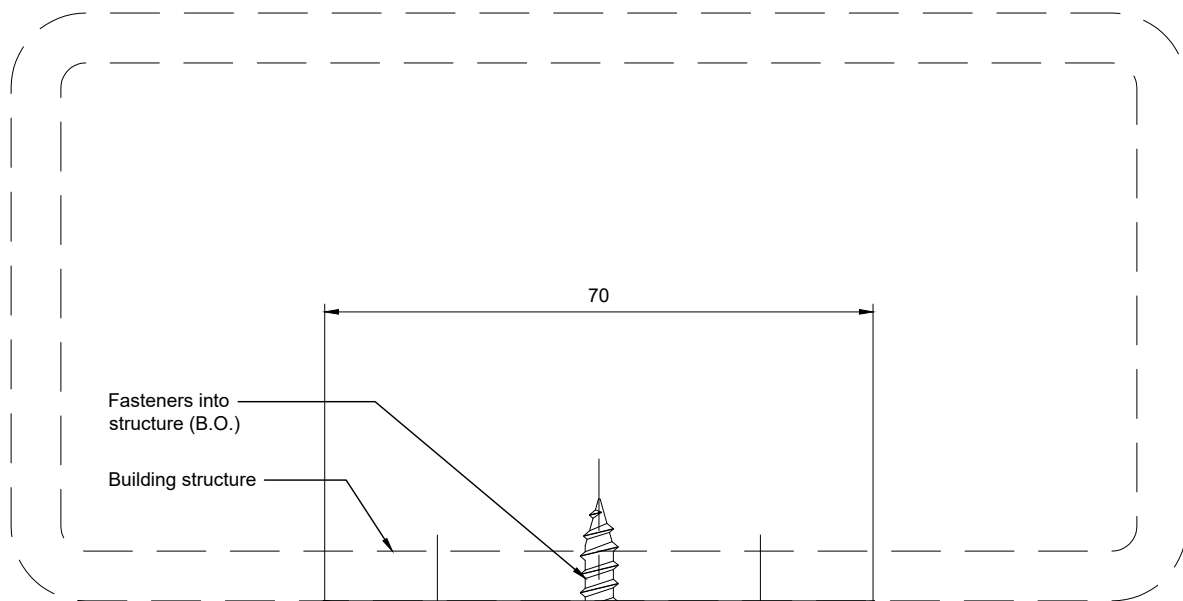
Quantity: See Purchase Order
 Material: Aluminum 6063-T6
 Finish: Mill unless otherwise specified

Available in the following finishes:-
 Mill Finish (Standard)
 Anodized
 Painted
 Clad with stainless steel brake shapes

Drawn	Drawn date
RL	APR 07-2014
Checked	Checked date
-	-
Scale	Rev.
1:1	0
DWG No	
PC-3710TS-A02	



**THERMALLY BROKEN PERIMETER CHANNELS
 for SEALED GLASS UNITS UP TO 37mm THICK
 HEAD DETAIL - FACE MOUNTED**



SUBJECT TO CHANGE BY PROJECT

Quantity: See Purchase Order
 Material: Aluminum 6063-T6
 Finish: Mill unless otherwise specified

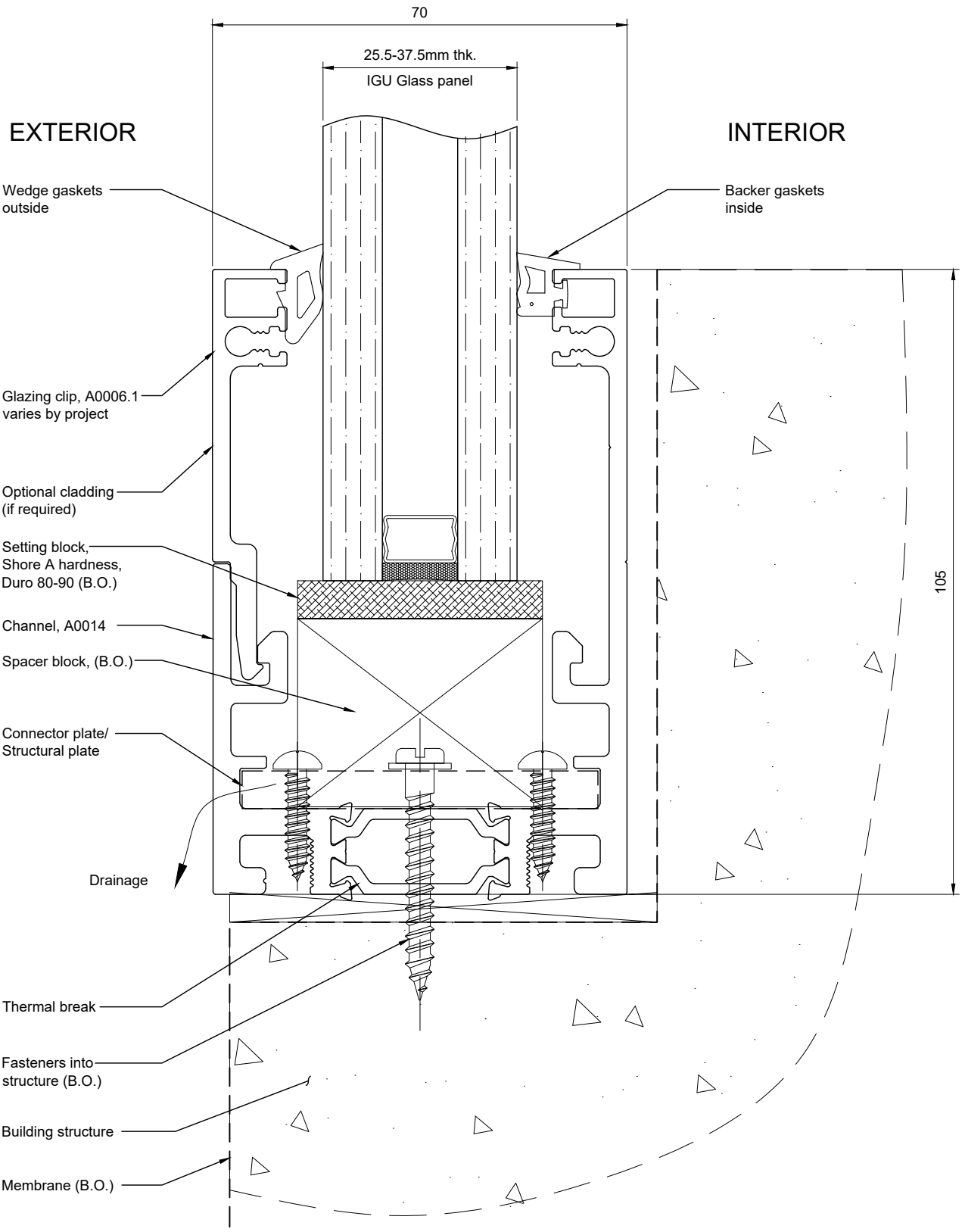
Available in the following finishes:-
 Mill Finish (Standard)
 Anodized
 Painted
 Clad with stainless steel brake shapes

Drawn	Drawn date
RL	APR 07-2014
Checked	Checked date
-	-
Scale	Rev.
1:1	0
DWG No	
PC-3710TB-A02	

stella

[t] (604) 231 5892
 [f] (604) 231 5893
 [e] info@stellaglasshardware.com

**THERMALLY BROKEN PERIMETER CHANNELS
 for SEALED GLASS UNITS UP TO 37mm THICK
 HEAD DETAIL - TOP MOUNTED**



SUBJECT TO CHANGE BY PROJECT

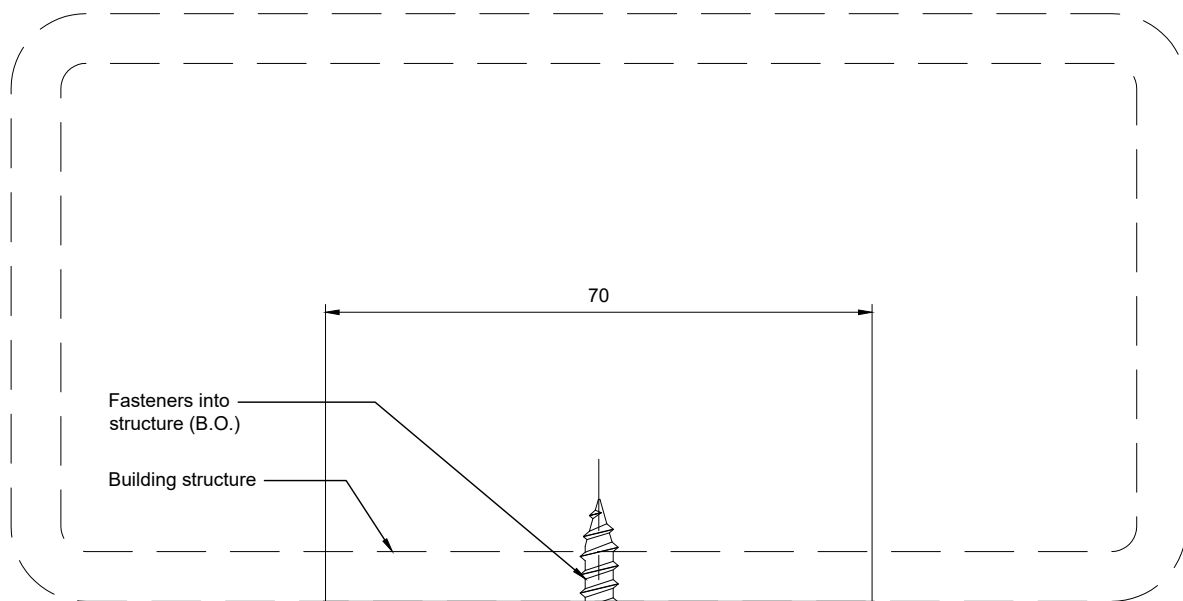
Quantity: See Purchase Order
 Material: Aluminum 6063-T6
 Finish: Mill unless otherwise specified

Available in the following finishes:-
 Mill Finish (Standard)
 Anodized
 Painted
 Clad with stainless steel brake shapes

Drawn	Drawn date
RL	OCT 21-2019
Checked	Checked date
-	-
Scale	Rev.
1:1	0
DWG No	
PC3710TB-A05	

[t] (604) 231 5892
 [f] (604) 231 5893
 [e] info@stellaglasshardware.com

**THERMALLY BROKEN PERIMETER CHANNELS
 for SEALED GLASS UNITS UP TO 37mm THICK
 SILL DETAIL - BOTTOM MOUNTED - LONG LEG**



Fasteners into structure (B.O.)
Building structure

70

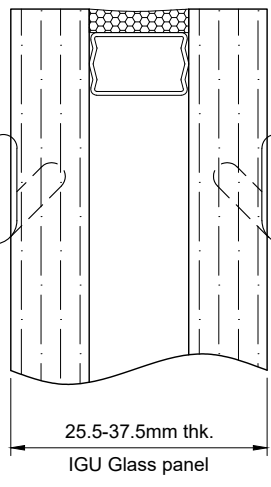
Thermal break
Connector plates
Channel, A0005

DEFLECTION MOVEMENT UP TO 50mm

Optional cladding (if required)
Glazing clip, A0006.1 varies by project

Kerf seal both sides

105



25.5-37.5mm thk.
IGU Glass panel

SUBJECT TO CHANGE BY PROJECT

Quantity: See Purchase Order
Material: Aluminum 6063-T6
Finish: Mill unless otherwise specified

Available in the following finishes:-
Mill Finish (Standard)
Anodized
Painted
Clad with stainless steel brake shapes

Drawn	Drawn date
RL	OCT 21-2019
Checked	Checked date
-	-
Scale	Rev.
1:1	0
DWG No	
PC-3710TB-A06	

stella
[t] (604) 231 5892
[f] (604) 231 5893
[e] info@stellaglasshardware.com

**THERMALLY BROKEN PERIMETER CHANNELS
for SEALED GLASS UNITS UP TO 37mm THICK
HEAD DETAIL - TOP MOUNTED - ONE LONG LEG**