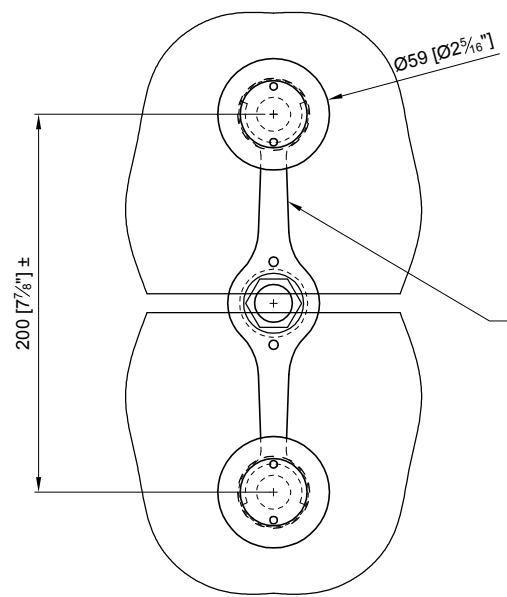
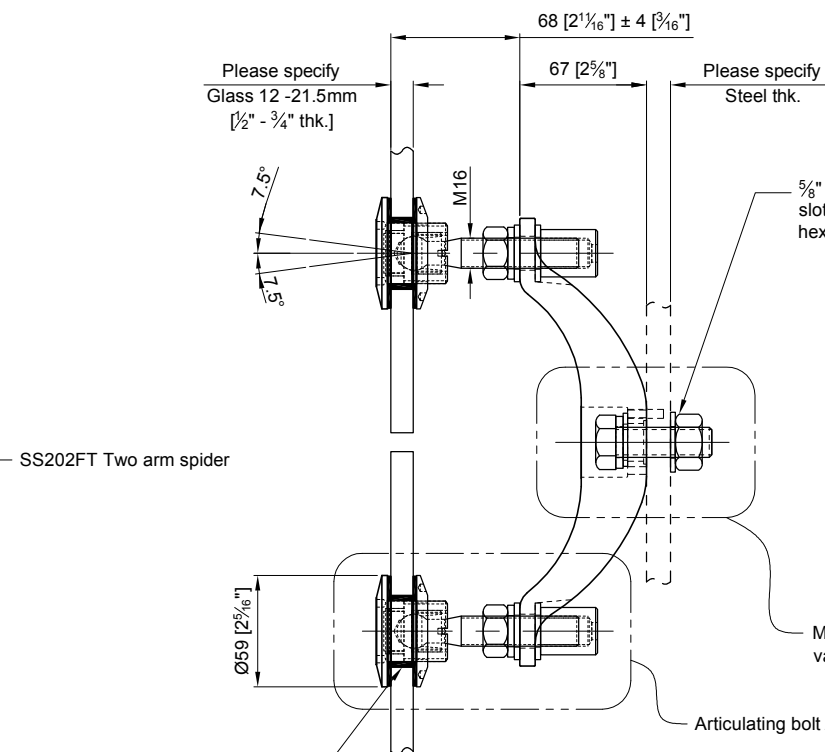


Load per leg
1,5kN @ yield

Load per leg
3,7kN @ yield



FRONT VIEW

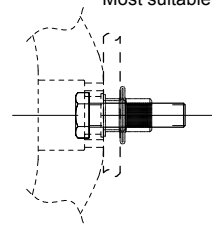


SIDE VIEW

Thru hole in glass:
min: Ø38.1mm [Ø1 1/2"]
recommended: Ø41.3mm [Ø1 5/8"]
max: Ø44.5mm [Ø1 3/4"]

5/8" Hex nut, flat washer,
slotted washer, spring washer,
hex bolt & tension pin

Alternative fixing method using
Stella Nutsert with 1/2"-13UNC
High strength bolt
Most suitable for HSS profiles



Mounting method
variable

Articulating bolt AB602T

SS202FT Two arm spider

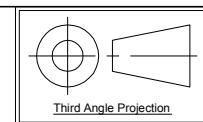
Please specify
Glass 12 -21.5mm
[1/2" - 3/4" thk.]

Please specify
Steel thk.

APPROVAL
DATE

Quantity: Sets
Material: Grade 304/316 Stainless steel
Finish: Spider: Satin; Glass bolt: Machined

Hole in glass see above
Dimensions millimeter unless otherwise shown
Apply loctite 243 to all threads during assembly
(To increase curing speed, please apply activator 7649)
Details are typical and are subject to change to meet project requirement



Drawn	Drawn date
JH	JAN 17-2013
Approved	Approved date
Scale	Rev.
1:4	-
DWG No	
SS202FT-AB602T	

stella
[t] (604) 231 5892
[f] (604) 231 5893
[e] info@stellaglasshardware.com

ASSEMBLY DRAWING
SS202FT TWO ARM SPIDER W/ ARTICULATING BOLT AB602T